

CD90 antibody [F15-42-1] (FITC)

Cat. No. GTX11155

Host	Mouse
Clonality	Monoclonal
Isotype	IgG1
Applications	FCM, IHC
Reactivity	Human, Cynomolgus monkey

References (5)

Package

500 µl

Applications

Application Note

*Optimal dilutions/concentrations should be determined by the researcher.

Suggested dilution	Recommended dilution
FCM	Neat
IHC	Assay dependent

Note : Use 10µl of the suggested working dilution to label 10⁶ cells in 100µl.

Not tested in other applications.

Properties

Form	Liquid
Buffer	PBS, 1% BSA
Preservative	0.09% Sodium azide
Storage	Store as concentrated solution. Centrifuge briefly prior to opening vial. For short-term storage (1-2 weeks), store at 4°C. For long-term storage, aliquot and store at -20°C or below. Avoid multiple freeze-thaw cycles. Protect from light.
Concentration	0.1 mg/ml (Please refer to the vial label for the specific concentration.)
Immunogen	Purified human brain CD90
Purification	Protein G purified
Conjugation	Fluorescein isothiocyanate (FITC) Wavelength

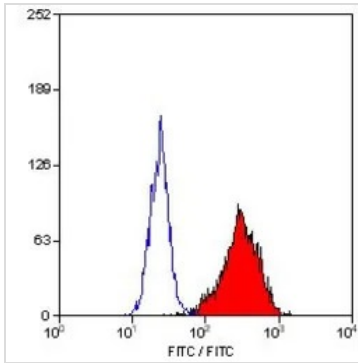
Note

For laboratory research use only. Not for any clinical, therapeutic, or diagnostic use in humans or animals. Not for animal or human consumption.

Purchasers shall not, and agree not to enable third parties to, analyze, copy, reverse engineer or otherwise attempt to determine the structure or sequence of the product.



For full product information, images and publications, please visit our [website](#).

DATA IMAGES

GTX11155 FCM Image

FACS analysis of HUT78 cells using GTX11155 CD90 antibody [F15-42-1] (FITC).



For full product information, images and publications, please visit our [website](#).

Date 2026 / 02 / 02 Page 2 of 2