

EFEMP1 antibody

Cat. No. GTX111657

Host	Rabbit
Clonality	Polyclonal
Isotype	IgG
Applications	WB, IHC-P
Reactivity	Human, Mouse

References (4)

Package

100 µl, 25 µl

Applications

Application Note

*Optimal dilutions/concentrations should be determined by the researcher.

Suggested dilution	Recommended dilution
WB	1:500-1:3000
IHC-P	1:100-1:1000

Not tested in other applications.

Calculated MW	55 kDa. (Note)
Product Note	KO/KD validation is based on published data (PMID: 30754729).

Properties

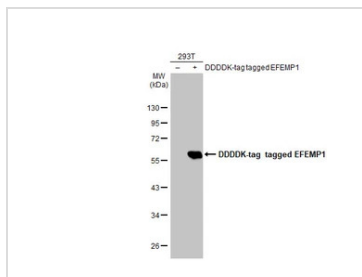
Form	Liquid
Buffer	PBS, 20% Glycerol
Preservative	0.025% ProClin 300
Storage	Store as concentrated solution. Centrifuge briefly prior to opening vial. For short-term storage (1-2 weeks), store at 4°C. For long-term storage, aliquot and store at -20°C or below. Avoid multiple freeze-thaw cycles.
Concentration	0.83 mg/ml (Please refer to the vial label for the specific concentration.)
Immunogen	Recombinant protein encompassing a sequence within the center region of human EFEMP1. The exact sequence is proprietary.
Purification	Purified by antigen-affinity chromatography.
Conjugation	Unconjugated

Note

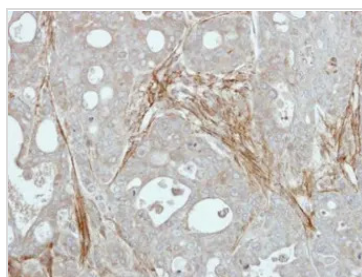
For laboratory research use only. Not for any clinical, therapeutic, or diagnostic use in humans or animals. Not for animal or human consumption.

Purchasers shall not, and agree not to enable third parties to, analyze, copy, reverse engineer or otherwise attempt to determine the structure or sequence of the product.

For full product information, images and publications, please visit our [website](#).

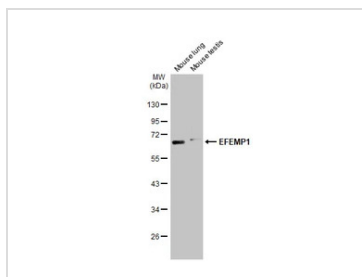
DATA IMAGES

GTx111657 WB Image

Non-transfected (–) and transfected (+) 293T whole cell extracts (30 µg) were separated by 10% SDS-PAGE, and the membrane was blotted with EFEMP1 antibody (GTx111657) diluted at 1:5000. The HRP-conjugated anti-rabbit IgG antibody (GTx213110-01) was used to detect the primary antibody.

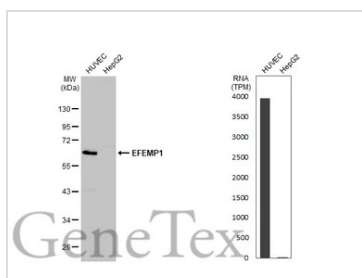

GTx111657 IHC-P Image

Immunohistochemical analysis of paraffin-embedded NCIN87 xenograft, using Fibulin 3 (GTx111657) antibody at 1:500 dilution.

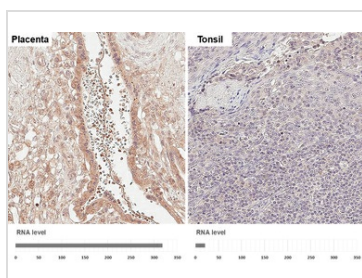
Antigen Retrieval: Trilogy™ (EDTA based, pH 8.0) buffer, 15min


GTx111657 WB Image

Various tissue extracts (50 µg) were separated by 10% SDS-PAGE, and the membrane was blotted with EFEMP1 antibody (GTx111657) diluted at 1:1000. The HRP-conjugated anti-rabbit IgG antibody (GTx213110-01) was used to detect the primary antibody, and the signal was developed with Trident femto Western HRP Substrate.


GTx111657 WB Image

Various whole cell extracts (30 µg) were separated by 10% SDS-PAGE, and the membrane was blotted with EFEMP1 antibody (GTx111657) diluted at 1:1000. The HRP-conjugated anti-rabbit IgG antibody (GTx213110-01) was used to detect the primary antibody. Corresponding RNA expression data for the same cell lines are based on Human Protein Atlas program.


GTx111657 IHC-P Image

EFEMP1 antibody detects EFEMP1 protein by immunohistochemical analysis.

Sample: Paraffin-embedded human tissues.

EFEMP1 stained by EFEMP1 antibody (GTx111657) diluted at 1:500.

Antigen Retrieval: Tris-EDTA buffer, pH 9.0, 15 min

Corresponding RNA levels (nTPM) in the tissues are based on Human Protein Atlas program.



For full product information, images and publications, please visit our [website](https://www.genetex.com).