

MSH6 antibody [C1C2], Internal

Cat. No. GTX111661

Host	Rabbit
Clonality	Polyclonal
Isotype	IgG
Application	WB, ICC/IF, IHC-P, IP, EMSA, IHC
Reactivity	Human, Mouse, Zebrafish

Reference (4)

★★★★★ Review (2)

Package

100 µl, 25 µl

APPLICATION

Application Note

*Optimal dilutions/concentrations should be determined by the researcher.

Suggested dilution	Recommended dilution
WB	1:500-1:3000
ICC/IF	1:100-1:1000
IHC-P	1:100-1:1000
IP	1:100-1:500
EMSA	Assay dependent
IHC	Assay dependent

Not tested in other applications.

Calculated MW 153 kDa. ([Note](#))

PROPERTIES

Form	Liquid
Buffer	0.1M Tris, 0.1M Glycine, 10% Glycerol
Preservative	0.01% Thimerosal
Storage	Store as concentrated solution. Centrifuge briefly prior to opening vial. For short-term storage (1-2 weeks), store at 4°C. For long-term storage, aliquot and store at -20°C or below. Avoid multiple freeze-thaw cycles.
Concentration	1 mg/ml (Please refer to the vial label for the specific concentration.)
Immunogen	Recombinant protein encompassing a sequence within the center region of human MSH6. The exact sequence is proprietary.
Purification	Purified by antigen-affinity chromatography.
Conjugation	Unconjugated



For full product information, images and publications, please visit our [website](#).

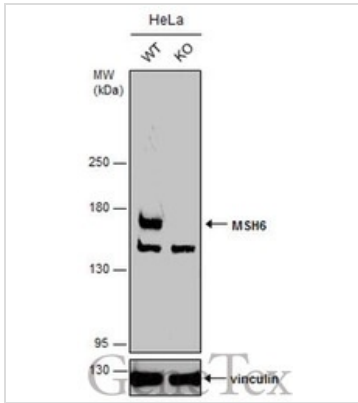
Date 2024 / 05 / 06 Page 1 of 2

For laboratory research use only. Not for any clinical, therapeutic, or diagnostic use in humans or animals. Not for animal or human consumption.

Note

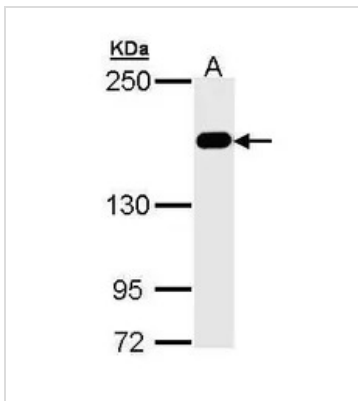
Purchasers shall not, and agree not to enable third parties to, analyze, copy, reverse engineer or otherwise attempt to determine the structure or sequence of the product.

DATA IMAGES



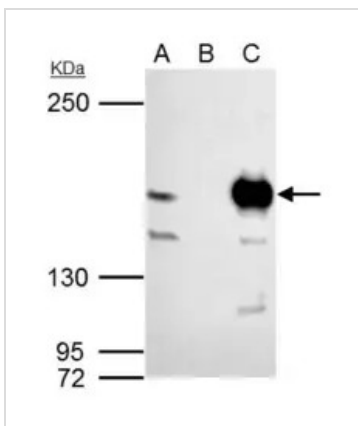
GTX111661 WB Image

Wild-type (WT) and MSH6 knockout (KO) HeLa cell extracts (30 μ g) were separated by 5% SDS-PAGE, and the membrane was blotted with MSH6 antibody [C1C2], Internal (GTX111661) diluted at 1:1000. The HRP-conjugated anti-rabbit IgG antibody (GTX213110-01) was used to detect the primary antibody.



GTX111661 WB Image

Sample (30 μ g of whole cell lysate)
A: Hep G2 (GTX27900)
5% SDS PAGE
GTX111661 diluted at 1:1000



GTX111661 IP Image

MSH6 antibody [C1C2], Internal immunoprecipitates MSH6 protein in IP experiments.

IP samples: 293T whole cell extract

A. 40 μ g 293T whole cell extract

B. Control with 4 μ g of preimmune Rabbit IgG

C. Immunoprecipitation of MSH6 protein by 4 μ g MSH6 antibody [C1C2], Internal (GTX111661)

5 % SDS-PAGE

The immunoprecipitated MSH6 protein was detected by MSH6 antibody [C1C2], Internal (GTX111661) diluted at 1:1000.

[EasyBlot anti-rabbit IgG (GTX221666-01) was used as a secondary reagent]



For full product information, images and publications, please visit our [website](https://www.genetex.com).