

Ezrin antibody [N2C2], Internal

Cat. No. GTX111709

Host	Rabbit
Clonality	Polyclonal
Isotype	IgG
Applications	WB, ICC/IF, IHC-P, IHC-Wm
Reactivity	Human, Mouse, Rat, Zebrafish

References (6)

Package

100 µl, 25 µl

Applications

Application Note

*Optimal dilutions/concentrations should be determined by the researcher.

Suggested dilution	Recommended dilution
WB	1:5000-1:20000
ICC/IF	1:100-1:1000
IHC-P	1:100-1:1000
IHC-Wm	Assay dependent

Not tested in other applications.

Calculated MW 69 kDa. ([Note](#))

Properties

Form	Liquid
Buffer	PBS, 20% Glycerol
Preservative	0.025% ProClin 300
Storage	Store as concentrated solution. Centrifuge briefly prior to opening vial. For short-term storage (1-2 weeks), store at 4°C. For long-term storage, aliquot and store at -20°C or below. Avoid multiple freeze-thaw cycles.
Concentration	1.84 mg/ml (Please refer to the vial label for the specific concentration.)
Immunogen	Recombinant protein encompassing a sequence within the center region of human Ezrin. The exact sequence is proprietary.
Purification	Purified by antigen-affinity chromatography.
Conjugation	Unconjugated

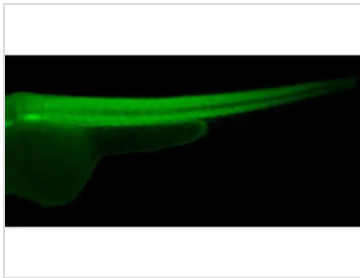
Note

For laboratory research use only. Not for any clinical, therapeutic, or diagnostic use in humans or animals. Not for animal or human consumption.

Purchasers shall not, and agree not to enable third parties to, analyze, copy, reverse engineer or otherwise attempt to determine the structure or sequence of the product.



For full product information, images and publications, please visit our [website](#).

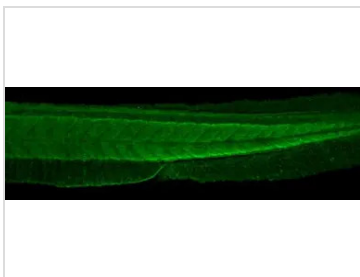
DATA IMAGES

GTX111709 IHC-Wm Image

Ezrin antibody [N2C2], Internal detects Ezrin protein on whole mount zebrafish by immunohistochemical analysis.

Sample: Paraformaldehyde-fixed 2 days-post-fertilization zebrafish embryo.

Green: Ezrin stained by Ezrin antibody [N2C2], Internal (GTX111709) diluted at 1:100.

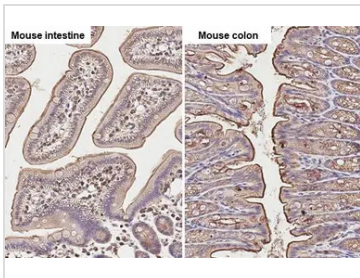
Antigen Retrieval: Tris-HCl buffer, pH 9.0, 20 min at 70°C


GTX111709 IHC-Wm Image

Ezrin antibody [N2C2], Internal detects Ezrin protein on whole-mount zebrafish embryos by immunohistochemical analysis.

Sample: Paraformaldehyde-fixed zebrafish embryos.

Ezrin antibody [N2C2], Internal (GTX111709) dilution: 1:200.

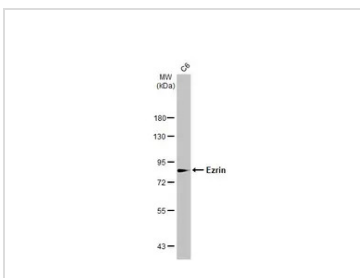

GTX111709 IHC-P Image

Ezrin antibody [N2C2], Internal detects Ezrin protein at cell membrane and cytoplasm by immunohistochemical analysis.

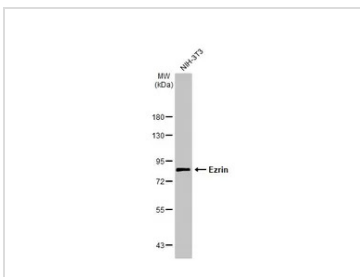
Sample: Paraffin-embedded mouse tissue.

Ezrin stained by Ezrin antibody [N2C2], Internal (GTX111709) diluted at 1:500.

Antigen Retrieval: Citrate buffer, pH 6.0, 15 min


GTX111709 WB Image

Whole cell extract (30 µg) was separated by 7.5% SDS-PAGE, and the membrane was blotted with Ezrin antibody [N2C2], Internal (GTX111709) diluted at 1:1000. The HRP-conjugated anti-rabbit IgG antibody (GTX213110-01) was used to detect the primary antibody.


GTX111709 WB Image

Whole cell extract (30 µg) was separated by 7.5% SDS-PAGE, and the membrane was blotted with Ezrin antibody [N2C2], Internal (GTX111709) diluted at 1:1000. The HRP-conjugated anti-rabbit IgG antibody (GTX213110-01) was used to detect the primary antibody.



For full product information, images and publications, please visit our [website](https://www.genetex.com).