

# Adenylate kinase 2 antibody [N1C2]

**Cat. No. GTX111726**

<b>Host</b>	Rabbit
<b>Clonality</b>	Polyclonal
<b>Isotype</b>	IgG
<b>Application</b>	WB, ICC/IF, IHC-P
<b>Reactivity</b>	Human, Rat

**Package**  
100 µl, 25 µl

## APPLICATION

### Application Note

\*Optimal dilutions/concentrations should be determined by the researcher.

Suggested dilution	Recommended dilution
WB	1:500-1:3000
ICC/IF	1:100-1:1000
IHC-P	1:100-1:1000

Not tested in other applications.

**Calculated MW** 26 kDa. ( [Note](#) )

## PROPERTIES

<b>Form</b>	Liquid
<b>Buffer</b>	0.1M Tris, 0.1M Glycine, 10% Glycerol
<b>Preservative</b>	0.01% Thimerosal
<b>Storage</b>	Store as concentrated solution. Centrifuge briefly prior to opening vial. For short-term storage (1-2 weeks), store at 4°C. For long-term storage, aliquot and store at -20°C or below. Avoid multiple freeze-thaw cycles.
<b>Concentration</b>	1 mg/ml (Please refer to the vial label for the specific concentration.)
<b>Immunogen</b>	Recombinant protein encompassing a sequence within the center region of human Adenylate kinase 2. The exact sequence is proprietary.
<b>Purification</b>	Purified by antigen-affinity chromatography.
<b>Conjugation</b>	Unconjugated

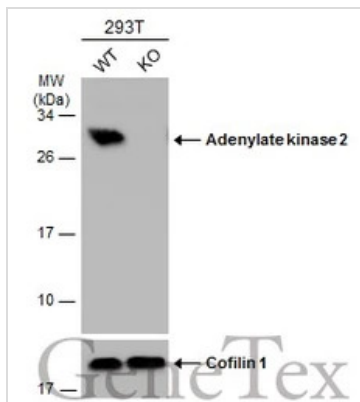
### Note

For laboratory research use only. Not for any clinical, therapeutic, or diagnostic use in humans or animals. Not for animal or human consumption.

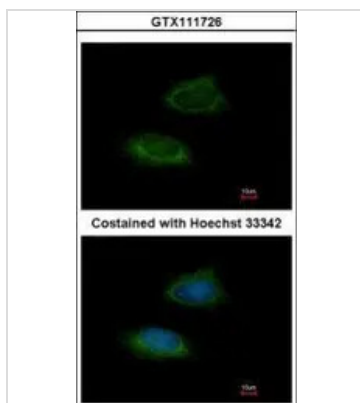
Purchasers shall not, and agree not to enable third parties to, analyze, copy, reverse engineer or otherwise attempt to determine the structure or sequence of the product.



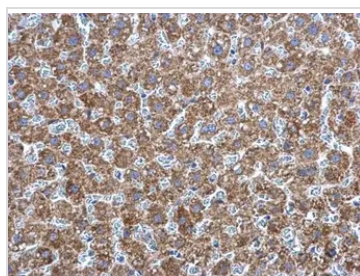
For full product information, images and publications, please visit our [website](#).

**DATA IMAGES**

**GTX111726 WB Image**

Wild-type (WT) and Adenylate kinase 2 knockout (KO) 293T cell extracts (30 µg) were separated by 12% SDS-PAGE, and the membrane was blotted with Adenylate kinase 2 antibody (GTX111726) diluted at 1:1000. The HRP-conjugated anti-rabbit IgG antibody (GTX213110-01) was used to detect the primary antibody.


**GTX111726 ICC/IF Image**

Immunofluorescence analysis of methanol-fixed HeLa, using Adenylate kinase 2(GTX111726) antibody at 1:200 dilution.

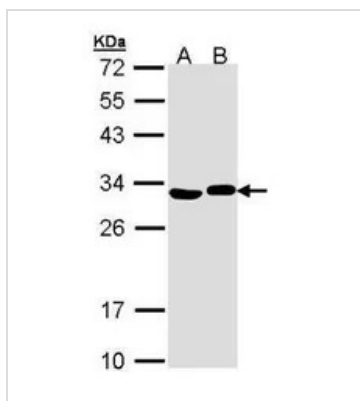

**GTX111726 IHC-P Image**

Adenylate kinase 2 antibody [N1C2] detects Adenylate kinase 2 protein at mitochondria in rat liver by immunohistochemical analysis.

Sample: Paraffin-embedded rat liver.

Adenylate kinase 2 antibody [N1C2] (GTX111726) diluted at 1:500.

Antigen Retrieval: Citrate buffer, pH 6.0, 15 min


**GTX111726 WB Image**

Sample (30 ug of whole cell lysate)

A: H1299

B: Hep G2 (GTX27900)

12% SDS PAGE

GTX111726 diluted at 1:1000



For full product information, images and publications, please visit our [website](https://www.genetex.com).