

## Adenylate kinase 2 antibody [N1C3-2]

Cat. No. GTX111737

Host	Rabbit
Clonality	Polyclonal
Isotype	IgG
Application	WB, ICC/IF, IHC-P
Reactivity	Human, Mouse, Rat

## Package

100 µl, 25 µl

## APPLICATION

## Application Note

\*Optimal dilutions/concentrations should be determined by the researcher.

Suggested dilution	Recommended dilution
WB	1:500-1:3000
ICC/IF	1:100-1:1000
IHC-P	1:100-1:1000

Not tested in other applications.

Calculated MW 26 kDa. ( [Note](#) )

## PROPERTIES

Form	Liquid
Buffer	0.1M Tris, 0.1M Glycine, 10% Glycerol
Preservative	0.01% Thimerosal
Storage	Store as concentrated solution. Centrifuge briefly prior to opening vial. For short-term storage (1-2 weeks), store at 4°C. For long-term storage, aliquot and store at -20°C or below. Avoid multiple freeze-thaw cycles.
Concentration	1 mg/ml (Please refer to the vial label for the specific concentration.)
Immunogen	Recombinant protein encompassing a sequence within the center region of human Adenylate kinase 2. The exact sequence is proprietary.
Purification	Purified by antigen-affinity chromatography.
Conjugation	Unconjugated

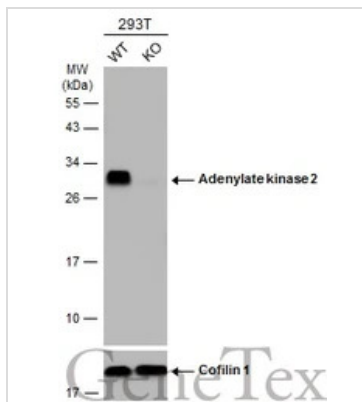
## Note

For laboratory research use only. Not for any clinical, therapeutic, or diagnostic use in humans or animals. Not for animal or human consumption.

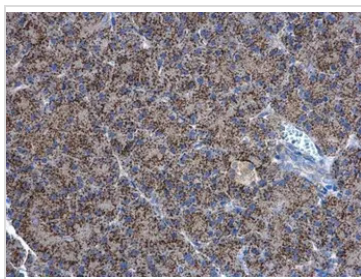
Purchasers shall not, and agree not to enable third parties to, analyze, copy, reverse engineer or otherwise attempt to determine the structure or sequence of the product.



For full product information, images and publications, please visit our [website](#).

**DATA IMAGES**

**GTx111737 WB Image**

Wild-type (WT) and Adenylate kinase 2 knockout (KO) 293T cell extracts (30 µg) were separated by 12% SDS-PAGE, and the membrane was blotted with Adenylate kinase 2 antibody (GTx111737) diluted at 1:1000. The HRP-conjugated anti-rabbit IgG antibody (GTx213110-01) was used to detect the primary antibody.

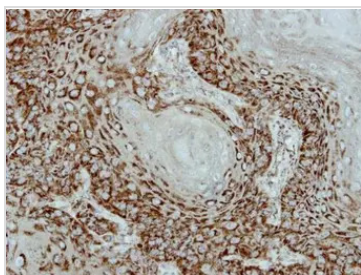

**GTx111737 IHC-P Image**

Adenylate kinase 2 antibody [N1C3-2] detects Adenylate kinase 2 protein at mitochondria in rat pancreas by immunohistochemical analysis.

Sample: Paraffin-embedded rat pancreas.

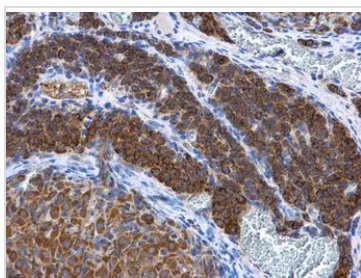
Adenylate kinase 2 antibody [N1C3-2] (GTx111737) diluted at 1:500.

Antigen Retrieval: Citrate buffer, pH 6.0, 15 min


**GTx111737 IHC-P Image**

Immunohistochemical analysis of paraffin-embedded Cal27 xenograft, using Adenylate kinase 2 (GTx111737) antibody at 1:500 dilution.

Antigen Retrieval: Citrate buffer, pH 6.0, 15 min


**GTx111737 IHC-P Image**

Adenylate kinase 2 antibody [N1C3-2] detects Adenylate kinase 2 protein at mitochondria in rat ovary by immunohistochemical analysis.

Sample: Paraffin-embedded rat ovary.

Adenylate kinase 2 antibody [N1C3-2] (GTx111737) diluted at 1:500.

Antigen Retrieval: Citrate buffer, pH 6.0, 15 min



For full product information, images and publications, please visit our [website](https://www.genetex.com).