

GALK2 antibody

Cat. No. GTX111750

Host	Rabbit
Clonality	Polyclonal
Isotype	IgG
Applications	WB, ICC/IF, IHC-P
Reactivity	Human, Mouse

Package
100 µl, 25 µl

Applications

Application Note

*Optimal dilutions/concentrations should be determined by the researcher.

Suggested dilution	Recommended dilution
WB	1:1000-1:10000
ICC/IF	1:100-1:1000
IHC-P	1:100-1:1000

Not tested in other applications.

Calculated MW 50 kDa. ([Note](#))

Properties

Form	Liquid
Buffer	0.1M Tris, 0.1M Glycine, 10% Glycerol
Preservative	0.01% Thimerosal
Storage	Store as concentrated solution. Centrifuge briefly prior to opening vial. For short-term storage (1-2 weeks), store at 4°C. For long-term storage, aliquot and store at -20°C or below. Avoid multiple freeze-thaw cycles.
Concentration	1 mg/ml (Please refer to the vial label for the specific concentration.)
Immunogen	Recombinant protein encompassing a sequence within the center region of human GALK2. The exact sequence is proprietary.
Purification	Purified by antigen-affinity chromatography.
Conjugation	Unconjugated

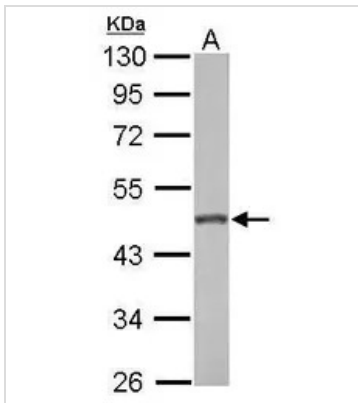
Note

For laboratory research use only. Not for any clinical, therapeutic, or diagnostic use in humans or animals. Not for animal or human consumption.

Purchasers shall not, and agree not to enable third parties to, analyze, copy, reverse engineer or otherwise attempt to determine the structure or sequence of the product.



For full product information, images and publications, please visit our [website](#).

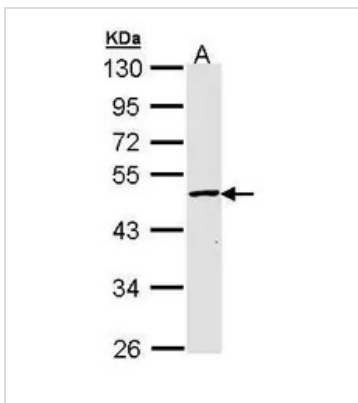
DATA IMAGES

GTx111750 WB Image

GALK2 antibody detects GALK2 protein by Western blot analysis.

A. 50 µg mouse kidney lysate/extract

10 % SDS-PAGE

GALK2 antibody (GTx111750) dilution: 1:1000

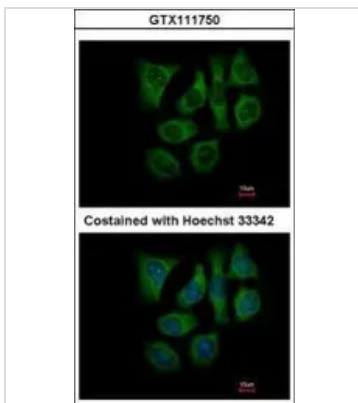

GTx111750 WB Image

Sample (30 ug of whole cell lysate)

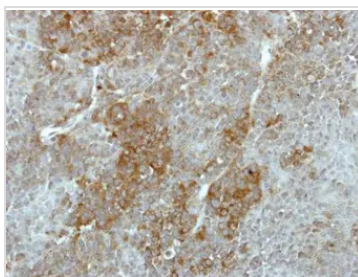
A: Hep G2 (GTx27900)

10% SDS PAGE

GTx111750 diluted at 1:5000


GTx111750 ICC/IF Image

Immunofluorescence analysis of methanol-fixed Hep3B, using GALK2(GTx111750) antibody at 1:500 dilution.


GTx111750 IHC-P Image

Immunohistochemical analysis of paraffin-embedded MCF7 xenograft, using GALK2(GTx111750) antibody at 1:500 dilution.

Antigen Retrieval: Citrate buffer, pH 6.0, 15 min



For full product information, images and publications, please visit our [website](https://www.genetex.com).