

GTF2H1 antibody [N1C1]

Cat. No. GTX111804

Host	Rabbit
Clonality	Polyclonal
Isotype	IgG
Application	WB, ICC/IF
Reactivity	Human

Package
100 µl, 25 µl

APPLICATION

Application Note

*Optimal dilutions/concentrations should be determined by the researcher.

Suggested dilution	Recommended dilution
WB	1:500-1:3000
ICC/IF	1:100-1:1000

Not tested in other applications.

Calculated MW 62 kDa. ([Note](#))

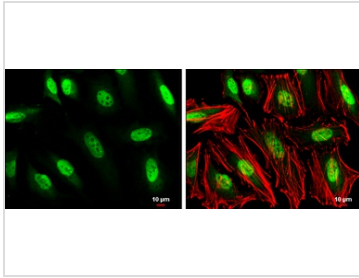
PROPERTIES

Form	Liquid
Buffer	PBS, 1% BSA, 20% Glycerol
Preservative	0.01% Thimerosal
Storage	Store as concentrated solution. Centrifuge briefly prior to opening vial. For short-term storage (1-2 weeks), store at 4°C. For long-term storage, aliquot and store at -20°C or below. Avoid multiple freeze-thaw cycles.
Concentration	1 mg/ml (Please refer to the vial label for the specific concentration.)
Immunogen	Recombinant protein encompassing a sequence within the center region of human GTF2H1. The exact sequence is proprietary.
Purification	Purified by antigen-affinity chromatography.
Conjugation	Unconjugated
Note	<p>For laboratory research use only. Not for any clinical, therapeutic, or diagnostic use in humans or animals. Not for animal or human consumption.</p> <p>Purchasers shall not, and agree not to enable third parties to, analyze, copy, reverse engineer or otherwise attempt to determine the structure or sequence of the product.</p>



For full product information, images and publications, please visit our [website](#).

DATA IMAGES



GTX111804 ICC/IF Image

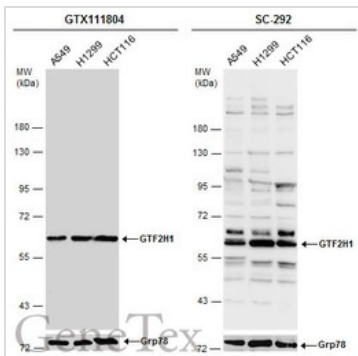
GTF2H1 antibody [N1C1] detects GTF2H1 protein at nucleus by immunofluorescent analysis.

Sample: HeLa cells were fixed in 4% paraformaldehyde at RT for 15 min.

Green: GTF2H1 stained by GTF2H1 antibody [N1C1] (GTX111804) diluted at 1:500.

Red: phalloidin, a cytoskeleton marker, diluted at 1:100.

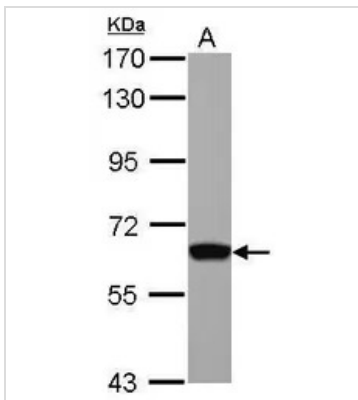
Scale bar = 10 μm.



GTX111804 WB Image

Various whole cell extracts (30 μg) were separated by 7.5% SDS-PAGE, and the membranes were blotted with GTF2H1 antibody [N1C1] (GTX111804) diluted at 1:1000 and competitor's antibody (SC-292) diluted by 1:200.

*The competitor is not affiliated with GeneTex and does not endorse this product.



GTX111804 WB Image

Sample (30 ug of whole cell lysate)

A: HepG2

7.5% SDS PAGE

GTX111804 diluted at 1:1000



For full product information, images and publications, please visit our [website](https://www.genetex.com).