

## SSRP1 antibody [N1N3]

**Cat. No. GTX111816**

<b>Host</b>	Rabbit
<b>Clonality</b>	Polyclonal
<b>Isotype</b>	IgG
<b>Application</b>	WB, IHC-P, IP
<b>Reactivity</b>	Human

Reference ( 1 )  
 Package  
 100 µl, 25 µl

### APPLICATION

#### Application Note

\*Optimal dilutions/concentrations should be determined by the researcher.

Suggested dilution	Recommended dilution
WB	1:500-1:3000
IHC-P	1:100-1:1000
IP	Assay dependent

Not tested in other applications.

<b>Calculated MW</b>	81 kDa. ( <a href="#">Note</a> )
<b>Product Note</b>	Knockdown/Knockout validation was supported by references (PMID:26990993)

### PROPERTIES

<b>Form</b>	Liquid
<b>Buffer</b>	0.1M Tris, 0.1M Glycine, 10% Glycerol
<b>Preservative</b>	0.01% Thimerosal
<b>Storage</b>	Store as concentrated solution. Centrifuge briefly prior to opening vial. For short-term storage (1-2 weeks), store at 4°C. For long-term storage, aliquot and store at -20°C or below. Avoid multiple freeze-thaw cycles.
<b>Concentration</b>	1 mg/ml (Please refer to the vial label for the specific concentration.)
<b>Immunogen</b>	Recombinant protein encompassing a sequence within the center region of human SSRP1. The exact sequence is proprietary.
<b>Purification</b>	Purified by antigen-affinity chromatography.
<b>Conjugation</b>	Unconjugated

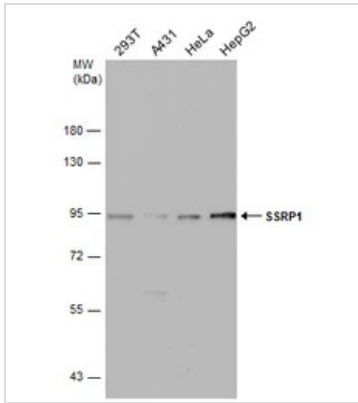


For full product information, images and publications, please visit our [website](#).

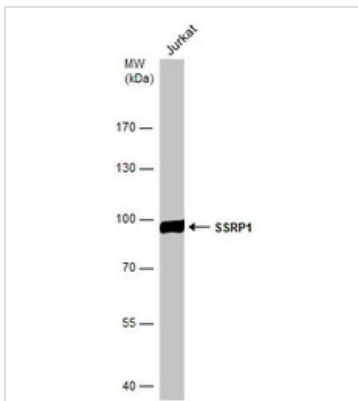
For laboratory research use only. Not for any clinical, therapeutic, or diagnostic use in humans or animals. Not for animal or human consumption.

**Note**

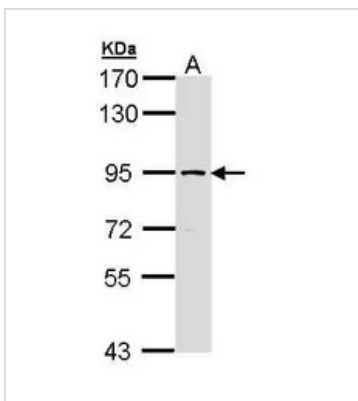
Purchasers shall not, and agree not to enable third parties to, analyze, copy, reverse engineer or otherwise attempt to determine the structure or sequence of the product.

**DATA IMAGES**

**GTX111816 WB Image**

Various whole cell extracts (30 µg) were separated by 7.5% SDS-PAGE, and the membrane was blotted with SSRP1 antibody [N1N3] (GTX111816) diluted at 1:1000. The HRP-conjugated anti-rabbit IgG antibody (GTX213110-01) was used to detect the primary antibody.


**GTX111816 WB Image**

Whole cell extract (30 µg) was separated by 7.5% SDS-PAGE, and the membrane was blotted with SSRP1 antibody [N1N3] (GTX111816) diluted at 1:1000. The HRP-conjugated anti-rabbit IgG antibody (GTX213110-01) was used to detect the primary antibody.


**GTX111816 WB Image**

Sample (30 µg of whole cell lysate)

A: Molt-4 (GTX27912)

7.5% SDS PAGE

GTX111816 diluted at 1:1000

The HRP-conjugated anti-rabbit IgG antibody (GTX213110-01) was used to detect the primary antibody.



For full product information, images and publications, please visit our [website](https://www.genetex.com).