

BNIP3L antibody

Cat. No. GTX111876

Host	Rabbit
Clonality	Polyclonal
Isotype	IgG
Application	WB, ICC/IF, IHC-P
Reactivity	Human, Mouse, Rat, Bovine

Reference (7)
 Package
 100 µl, 25 µl

APPLICATION

Application Note

*Optimal dilutions/concentrations should be determined by the researcher.

Suggested dilution	Recommended dilution
WB	1:500-1:3000
ICC/IF	1:100-1:1000
IHC-P	1:100-1:1000

Not tested in other applications.

Calculated MW 24 kDa. ([Note](#))

PROPERTIES

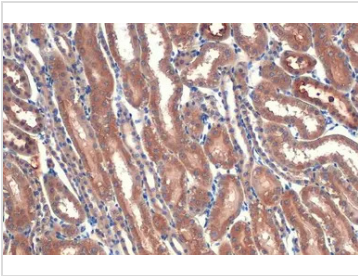
Form	Liquid
Buffer	PBS, 20% Glycerol
Preservative	0.025% ProClin 300
Storage	Store as concentrated solution. Centrifuge briefly prior to opening vial. For short-term storage (1-2 weeks), store at 4°C. For long-term storage, aliquot and store at -20°C or below. Avoid multiple freeze-thaw cycles.
Concentration	2.2 mg/ml (Please refer to the vial label for the specific concentration.)
Immunogen	Carrier-protein conjugated synthetic peptide encompassing a sequence within the center region of human BNIP3L. The exact sequence is proprietary.
Purification	Purified by antigen-affinity chromatography.
Conjugation	Unconjugated

Note For laboratory research use only. Not for any clinical, therapeutic, or diagnostic use in humans or animals. Not for animal or human consumption.

Purchasers shall not, and agree not to enable third parties to, analyze, copy, reverse engineer or otherwise attempt to determine the structure or sequence of the product.



For full product information, images and publications, please visit our [website](#).

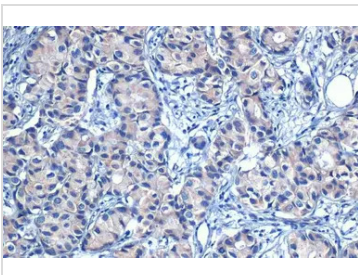
DATA IMAGES

GTX111876 IHC-P Image

BNIP3L antibody detects BNIP3L protein at cytoplasm and nucleus by immunohistochemical analysis.

Sample: Paraffin-embedded mouse kidney.

BNIP3L stained by BNIP3L antibody (GTX111876) diluted at 1:750.

Antigen Retrieval: Citrate buffer, pH 6.0, 15 min

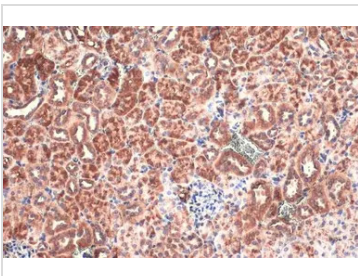

GTX111876 IHC-P Image

BNIP3L antibody detects BNIP3L protein at cytoplasm by immunohistochemical analysis.

Sample: Paraffin-embedded human breast carcinoma.

BNIP3L stained by BNIP3L antibody (GTX111876) diluted at 1:750.

Antigen Retrieval: Citrate buffer, pH 6.0, 15 min

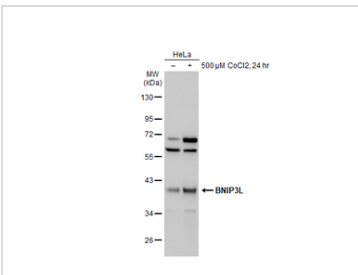

GTX111876 IHC-P Image

BNIP3L antibody detects BNIP3L protein at cytoplasm by immunohistochemical analysis.

Sample: Paraffin-embedded mouse kidney.

BNIP3L stained by BNIP3L antibody (GTX111876) diluted at 1:500.

Antigen Retrieval: Citrate buffer, pH 6.0, 15 min


GTX111876 WB Image

Untreated (-) and treated (+) HeLa whole cell extracts (30 μg) were separated by 10% SDS-PAGE, and the membrane was blotted with BNIP3L antibody (GTX111876) diluted at 1:1000. The HRP-conjugated anti-rabbit IgG antibody (GTX213110-01) was used to detect the primary antibody.



For full product information, images and publications, please visit our [website](https://www.genetex.com).