

## BNIP3L antibody

Cat. No. GTX111876

Host	Rabbit
Clonality	Polyclonal
Isotype	IgG
Applications	WB, ICC/IF, IHC-P
Reactivity	Human, Mouse, Rat, Bovine

References ( 8 )

Package

100 µl, 25 µl

## Applications

## Application Note

\*Optimal dilutions/concentrations should be determined by the researcher.

Suggested dilution	Recommended dilution
WB	1:500-1:3000
ICC/IF	1:100-1:1000
IHC-P	1:100-1:1000

Not tested in other applications.

Calculated MW 24 kDa. ( [Note](#) )

## Properties

Form	Liquid
Buffer	PBS, 20% Glycerol
Preservative	0.025% ProClin 300
Storage	Store as concentrated solution. Centrifuge briefly prior to opening vial. For short-term storage (1-2 weeks), store at 4°C. For long-term storage, aliquot and store at -20°C or below. Avoid multiple freeze-thaw cycles.
Concentration	1.44 mg/ml (Please refer to the vial label for the specific concentration.)
Immunogen	Carrier-protein conjugated synthetic peptide encompassing a sequence within the center region of human BNIP3L. The exact sequence is proprietary.
Purification	Purified by antigen-affinity chromatography.
Conjugation	Unconjugated

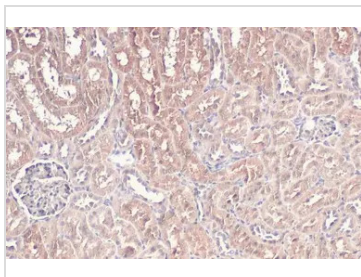
## Note

For laboratory research use only. Not for any clinical, therapeutic, or diagnostic use in humans or animals. Not for animal or human consumption.

Purchasers shall not, and agree not to enable third parties to, analyze, copy, reverse engineer or otherwise attempt to determine the structure or sequence of the product.



For full product information, images and publications, please visit our [website](#).

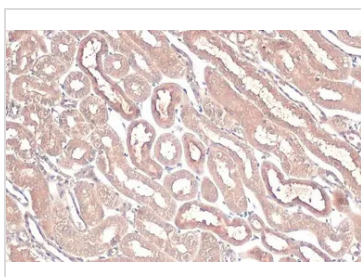
**DATA IMAGES**

**GTX111876 IHC-P Image**

BNIP3L antibody detects BNIP3L protein at cytoplasm by immunohistochemical analysis.

Sample: Paraffin-embedded rat kidney.

BNIP3L stained by BNIP3L antibody (GTX111876) diluted at 1:500.

Antigen Retrieval: Citrate buffer, pH 6.0, 15 min

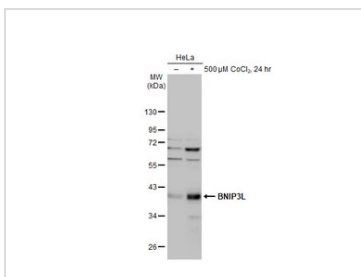

**GTX111876 IHC-P Image**

BNIP3L antibody detects BNIP3L protein at cytoplasm by immunohistochemical analysis.

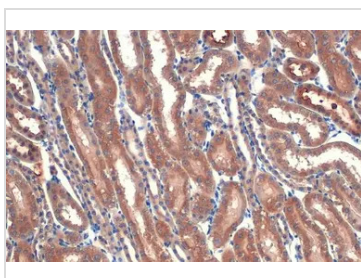
Sample: Paraffin-embedded mouse kidney.

BNIP3L stained by BNIP3L antibody (GTX111876) diluted at 1:500.

Antigen Retrieval: Citrate buffer, pH 6.0, 15 min


**GTX111876 WB Image**

Untreated (–) and treated (+) HeLa whole cell extracts (30 μg) were separated by 10% SDS-PAGE, and the membrane was blotted with BNIP3L antibody (GTX111876) diluted at 1:1000. The HRP-conjugated anti-rabbit IgG antibody (GTX213110-01) was used to detect the primary antibody.

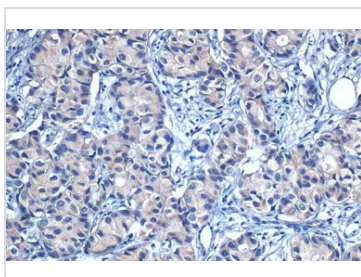

**GTX111876 IHC-P Image**

BNIP3L antibody detects BNIP3L protein at cytoplasm and nucleus by immunohistochemical analysis.

Sample: Paraffin-embedded mouse kidney.

BNIP3L stained by BNIP3L antibody (GTX111876) diluted at 1:750.

Antigen Retrieval: Citrate buffer, pH 6.0, 15 min


**GTX111876 IHC-P Image**

BNIP3L antibody detects BNIP3L protein at cytoplasm by immunohistochemical analysis.

Sample: Paraffin-embedded human breast carcinoma.

BNIP3L stained by BNIP3L antibody (GTX111876) diluted at 1:750.

Antigen Retrieval: Citrate buffer, pH 6.0, 15 min



For full product information, images and publications, please visit our [website](https://www.genetex.com).