

CD3 gamma antibody [C1C3]

Cat. No. GTX111878

Host	Rabbit
Clonality	Polyclonal
Isotype	IgG
Applications	WB, IHC-P, FCM
Reactivity	Human

References (1)

 Review (1)

Package

100 µl, 25 µl

Applications

Application Note

*Optimal dilutions/concentrations should be determined by the researcher.

Suggested dilution	Recommended dilution
WB	1:500-1:3000
IHC-P	1:100-1:1000
FCM	1:50-1:200

Not tested in other applications.

Calculated MW 20 kDa. ([Note](#))

Properties

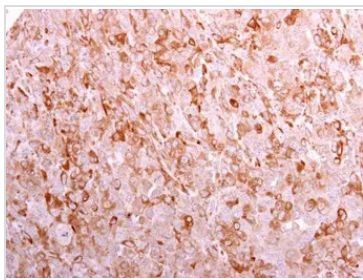
Form	Liquid
Buffer	0.1M Tris, 0.1M Glycine, 10% Glycerol
Preservative	0.01% Thimerosal
Storage	Store as concentrated solution. Centrifuge briefly prior to opening vial. For short-term storage (1-2 weeks), store at 4°C. For long-term storage, aliquot and store at -20°C or below. Avoid multiple freeze-thaw cycles.
Concentration	1 mg/ml (Please refer to the vial label for the specific concentration.)
Immunogen	Synthetic peptide encompassing a sequence within the Intracellular domain of human CD3 gamma. The exact sequence is proprietary.
Purification	Purified by antigen-affinity chromatography.
Conjugation	Unconjugated
Note	For laboratory research use only. Not for any clinical, therapeutic, or diagnostic use in humans or animals. Not for animal or human consumption. Purchasers shall not, and agree not to enable third parties to, analyze, copy, reverse engineer or otherwise attempt to determine the structure or sequence of the product.



For full product information, images and publications, please visit our [website](#).

Date 2026 / 06 / 27 Page 1 of 2

DATA IMAGES

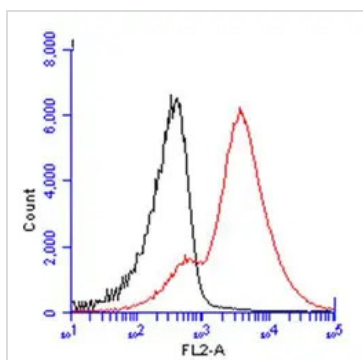
**GTX111878 IHC-P Image**

CD3 gamma antibody [C1C3] detects CD3 gamma protein at cell membrane by immunohistochemical analysis.

Sample: Paraffin-embedded human PANC1 xenograft.

CD3 gamma antibody [C1C3] (GTX111878) diluted at 1:500.

Antigen Retrieval: Citrate buffer, pH 6.0, 15 min

**GTX111878 FCM Image**

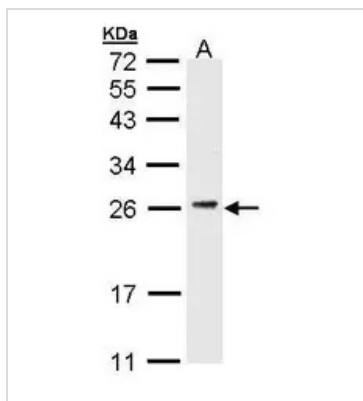
CD3 gamma antibody [C1C3] (GTX111878) detects CD3 gamma protein by flow cytometry analysis.

Sample: mouse splenocytes cell fixed in 4% paraformaldehyde at 4oC for 15 min.

Black: Unlabelled sample was used as a control.

Red: CD3 gamma antibody [C1C3] (GTX111878) dilution: 1:50.

Acquisition of 20,000 events were collected for FACS analysis.

**GTX111878 WB Image**

Sample (30 ug of whole cell lysate)

A: Molt-4 (GTX27912)

12% SDS PAGE

GTX111878 diluted at 1:3000



For full product information, images and publications, please visit our [website](#).