

## PRX III antibody [C2C3], C-term

Cat. No. GTX111887

Host	Rabbit
Clonality	Polyclonal
Isotype	IgG
Application	WB, ICC/IF, IHC-P
Reactivity	Human

Package  
100 µl, 25 µl

## APPLICATION

## Application Note

\*Optimal dilutions/concentrations should be determined by the researcher.

Suggested dilution	Recommended dilution
WB	1:500-1:3000
ICC/IF	1:100-1:1000
IHC-P	1:100-1:1000

Not tested in other applications.

Calculated MW 28 kDa. ( [Note](#) )

## PROPERTIES

Form	Liquid
Buffer	0.1M Tris, 0.1M Glycine, 10% Glycerol
Preservative	0.01% Thimerosal
Storage	Store as concentrated solution. Centrifuge briefly prior to opening vial. For short-term storage (1-2 weeks), store at 4°C. For long-term storage, aliquot and store at -20°C or below. Avoid multiple freeze-thaw cycles.
Concentration	1 mg/ml (Please refer to the vial label for the specific concentration.)
Immunogen	Carrier-protein conjugated synthetic peptide encompassing a sequence within the C-terminus region of human PRX III. The exact sequence is proprietary.
Purification	Purified by antigen-affinity chromatography.
Conjugation	Unconjugated

## Note

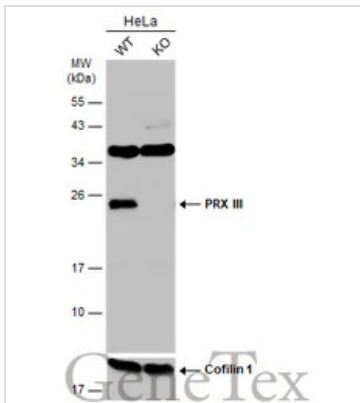
For laboratory research use only. Not for any clinical, therapeutic, or diagnostic use in humans or animals. Not for animal or human consumption.

Purchasers shall not, and agree not to enable third parties to, analyze, copy, reverse engineer or otherwise attempt to determine the structure or sequence of the product.



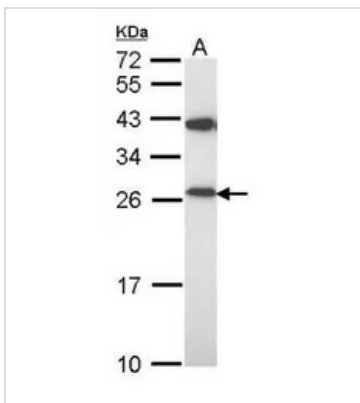
For full product information, images and publications, please visit our [website](#).

## DATA IMAGES



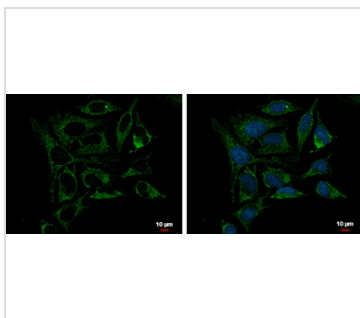
### GTx111887 WB Image

Wild-type (WT) and PRX III knockout (KO) HeLa cell extracts (30 µg) were separated by 12% SDS-PAGE, and the membrane was blotted with PRX III antibody [C2C3], C-term (GTx111887) diluted at 1:500. The HRP-conjugated anti-rabbit IgG antibody (GTx213110-01) was used to detect the primary antibody.



### GTx111887 WB Image

Sample (30 ug of whole cell lysate)  
A: 293T  
12% SDS PAGE  
GTx111887 diluted at 1:1000



### GTx111887 ICC/IF Image

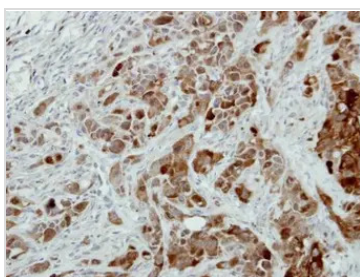
Peroxiredoxin 3 antibody [C2C3], C-term detects Peroxiredoxin 3 protein at mitochondria by immunofluorescent analysis.

Sample: HeLa cells were fixed in 2% paraformaldehyde/culture medium at 37°C for 30 min.

Green: Peroxiredoxin 3 protein stained by Peroxiredoxin 3 antibody [C2C3], C-term (GTx111887) diluted at 1:1000.

Blue: Hoechst 33342 staining.

Scale bar = 10 µm.



### GTx111887 IHC-P Image

Immunohistochemical analysis of paraffin-embedded H358 xenograft, using PRX III (GTx111887) antibody at 1:500 dilution.

Antigen Retrieval: Citrate buffer, pH 6.0, 15 min



For full product information, images and publications, please visit our [website](https://www.genetex.com).