

Von Hippel Lindau antibody [3F391]

Cat. No. GTX11189

Host	Mouse
Clonality	Monoclonal
Isotype	IgG1
Application	WB, ELISA, IHC
Reactivity	Human, Mouse

Reference (1)

Package

250 µl

APPLICATION

Application Note

*Optimal dilutions/concentrations should be determined by the researcher.

Suggested dilution	Recommended dilution
WB	Assay dependent
ELISA	Assay dependent
IHC	Assay dependent

Not tested in other applications.

Calculated MW 24 kDa. ([Note](#))

Product Note Does not recognize the truncated form of VHL protein.

PROPERTIES

Form	Liquid
Buffer	PBS pH7.4, 0.2% BSA
Preservative	0.09% Sodium azide
Storage	Store as concentrated solution. Centrifuge briefly prior to opening vial. For short-term storage (1-2 weeks), store at 4°C. For long-term storage, aliquot and store at -20°C or below. Avoid multiple freeze-thaw cycles.
Concentration	Batch dependent (Please refer to the vial label for the specific concentration.)
Immunogen	Recombinant protein containing aa1-213 of human Von Hippel-Lindau Protein (vHL). Epitope: aa1-54.
Purification	Protein G purified
Conjugation	Unconjugated



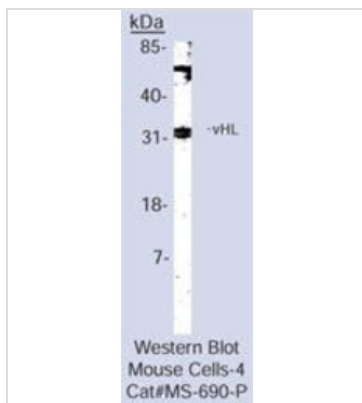
For full product information, images and publications, please visit our [website](#).

For laboratory research use only. Not for any clinical, therapeutic, or diagnostic use in humans or animals. Not for animal or human consumption.

Note

Purchasers shall not, and agree not to enable third parties to, analyze, copy, reverse engineer or otherwise attempt to determine the structure or sequence of the product.

DATA IMAGES



GTX11189 WB Image

WB analysis of mouse cell lysate using GTX11189 Von Hippel Lindau antibody [3F391].



For full product information, images and publications, please visit our [website](#).