

Vinculin antibody [VIN-11-5]

Cat. No. GTX11193

Host	Mouse
Clonality	Monoclonal
Isotype	IgG1
Applications	WB, ICC/IF
Reactivity	Human, Mouse, Bovine, Chicken, Gerbil

References (1)

Package

200 µl

Applications

Application Note

*Optimal dilutions/concentrations should be determined by the researcher.

Suggested dilution	Recommended dilution
WB	Assay dependent
ICC/IF	1:50

Not tested in other applications.

Calculated MW 125 kDa. ([Note](#))

Product Note The antibody reacts best with cultured chicken fibroblasts. Labeling also may be obtained with bovine, human, or mouse cells.

Properties

Form	Liquid
Buffer	Ascites
Preservative	15mM Sodium azide
Storage	Store as concentrated solution. Centrifuge briefly prior to opening vial. For short-term storage (1-2 weeks), store at 4°C. For long-term storage, aliquot and store at -20°C or below. Avoid multiple freeze-thaw cycles.
Immunogen	smooth muscle vinculin from chicken gizzard.
Purification	Unpurified
Conjugation	Unconjugated

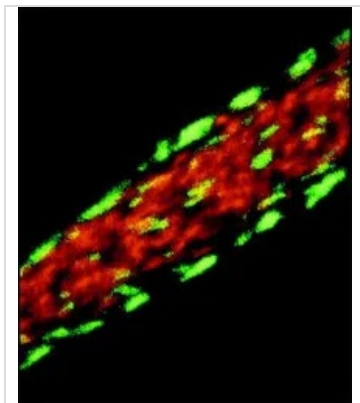
Note For laboratory research use only. Not for any clinical, therapeutic, or diagnostic use in humans or animals. Not for animal or human consumption.

Purchasers shall not, and agree not to enable third parties to, analyze, copy, reverse engineer or otherwise attempt to determine the structure or sequence of the product.



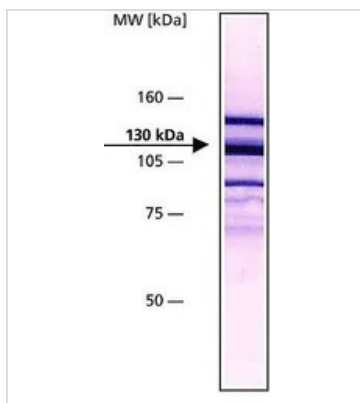
For full product information, images and publications, please visit our [website](#).

DATA IMAGES



GTX11193 ICC/IF Image

ICC/IF analysis of an isolated smooth muscle cell (chicken gizzard) using GTX11193 Vinculin antibody [VIN-11-5] (green) and anti-alpha-Actinin antibody (red).



GTX11193 WB Image

WB analysis of chicken gizzard extract using GTX11193 Vinculin antibody [VIN-11-5] at 1:200.



For full product information, images and publications, please visit our [website](#).