

Human RPL17 protein, His tag

Cat. No. GTX111934-pro
Species Human

Package

100 µg, 25 µg

PROPERTIES

Form Liquid

Buffer PBS, 0.1% SDS

Preservative No Preservative

Storage Store as concentrated solution. Centrifuge briefly prior to opening vial. Aliquot and store at -20°C or below. Avoid multiple freeze-thaw cycles.

Concentration Batch dependent (Please refer to the vial label for the specific concentration.)

Region/Sequence N-terminal His tagged full length protein of NP_001030178

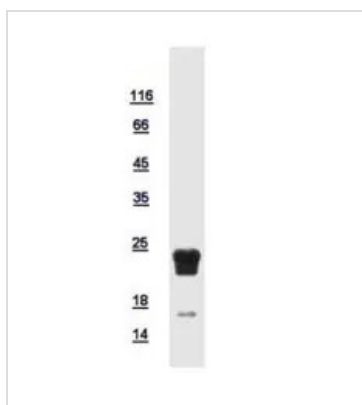
Expression System E. coli

Purity >90%

Conjugation Unconjugated

Note For In vitro laboratory use only. Not for any clinical, therapeutic, or diagnostic use in humans or animals. Not for animal or human consumption.

DATA IMAGES



GTX111934-pro Image

10µg of GTX111934-pro RPL17 recombinant protein analyzed using SDS-PAGE and stained with coomassie blue and captured by black and white camera.


For full product information, images and publications, please visit our [website](#).