

## Securin antibody

Cat. No. GTX111938

<b>Host</b>	Rabbit
<b>Clonality</b>	Polyclonal
<b>Isotype</b>	IgG
<b>Applications</b>	WB, ICC/IF, IHC-P, IP
<b>Reactivity</b>	Human

References ( 4 )

Package

100 µl, 25 µl

## Applications

## Application Note

\*Optimal dilutions/concentrations should be determined by the researcher.

Suggested dilution	Recommended dilution
WB	1:500-1:3000
ICC/IF	1:100-1:1000
IHC-P	1:100-1:1000
IP	1:100-1:500

Not tested in other applications.

Calculated MW 22 kDa. ( [Note](#) )

## Properties

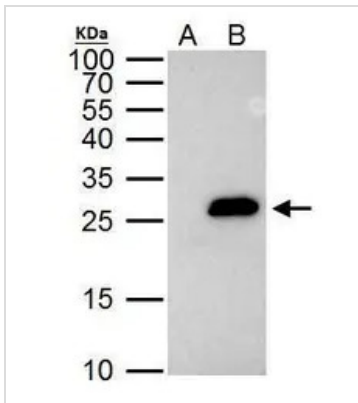
<b>Form</b>	Liquid
<b>Buffer</b>	PBS, 1% BSA, 20% Glycerol
<b>Preservative</b>	0.01% Thimerosal
<b>Storage</b>	Store as concentrated solution. Centrifuge briefly prior to opening vial. For short-term storage (1-2 weeks), store at 4°C. For long-term storage, aliquot and store at -20°C or below. Avoid multiple freeze-thaw cycles.
<b>Concentration</b>	1 mg/ml (Please refer to the vial label for the specific concentration.)
<b>Immunogen</b>	Full length human Securin Recombinant protein.
<b>Purification</b>	Purified by antigen-affinity chromatography.
<b>Conjugation</b>	Unconjugated

## Note

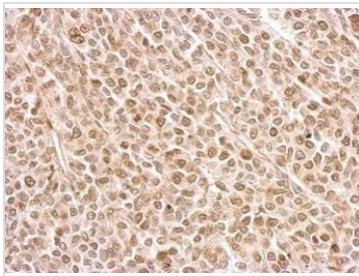
For laboratory research use only. Not for any clinical, therapeutic, or diagnostic use in humans or animals. Not for animal or human consumption.

Purchasers shall not, and agree not to enable third parties to, analyze, copy, reverse engineer or otherwise attempt to determine the structure or sequence of the product.

For full product information, images and publications, please visit our [website](#).

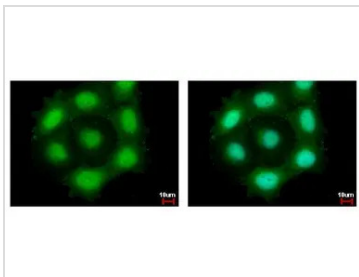
**DATA IMAGES**

**GTX111938 IP Image**

Securin antibody immunoprecipitates Securin protein in IP experiments. IP Sample: HeLa whole cell lysate/extract A. Control with 2  $\mu$ g of preimmune rabbit IgG B. Immunoprecipitation of Securin protein by 2  $\mu$ g of Securin antibody (GTX111938) 12% SDS-PAGE The immunoprecipitated Securin protein was detected by Securin antibody (GTX111938) diluted at 1:1000. EasyBlot anti-rabbit IgG (GTX221666-01) was used as a secondary reagent.

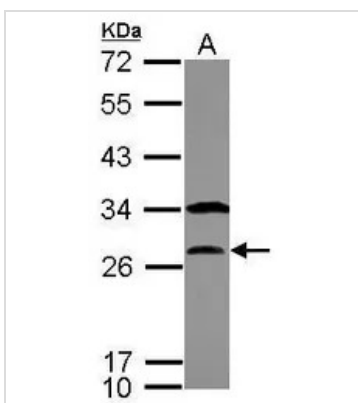

**GTX111938 IHC-P Image**

Securin antibody detects PTTG1 protein at on BT483 xenograft by immunohistochemical analysis. Sample: Paraffin-embedded BT483 xenograft. Securin antibody (GTX111938) dilution: 1:500.

Antigen Retrieval: Trilogy™ (EDTA based, pH 8.0) buffer, 15min


**GTX111938 ICC/IF Image**

Securin antibody detects PTTG1 protein at cytoplasm and nucleus by immunofluorescent analysis. Sample: MCF-7 cells were fixed in 4% paraformaldehyde at RT for 15 min. Green: PTTG1 protein stained by Securin antibody (GTX111938) diluted at 1:500. Blue: Hoechst 33342 staining.


**GTX111938 WB Image**

Sample (30  $\mu$ g of whole cell lysate)  
A: IMR32  
12% SDS PAGE  
GTX111938 diluted at 1:1000



For full product information, images and publications, please visit our [website](https://www.genetex.com).