

Cyclin T2 antibody [C2C3], C-term

Cat. No. GTX111944

Host	Rabbit
Clonality	Polyclonal
Isotype	IgG
Applications	WB, ICC/IF, IHC-P
Reactivity	Human, Mouse

Package
100 µl, 25 µl

Applications

Application Note

*Optimal dilutions/concentrations should be determined by the researcher.

Suggested dilution	Recommended dilution
WB	1:500-1:3000
ICC/IF	1:100-1:1000
IHC-P	1:100-1:1000

Not tested in other applications.

Calculated MW 81 kDa. ([Note](#))

Properties

Form	Liquid
Buffer	0.1M Tris, 0.1M Glycine, 10% Glycerol
Preservative	0.01% Thimerosal
Storage	Store as concentrated solution. Centrifuge briefly prior to opening vial. For short-term storage (1-2 weeks), store at 4°C. For long-term storage, aliquot and store at -20°C or below. Avoid multiple freeze-thaw cycles.
Concentration	0.51 mg/ml (Please refer to the vial label for the specific concentration.)
Immunogen	Recombinant protein encompassing a sequence within the C-terminus region of human cyclin T2. The exact sequence is proprietary.
Purification	Purified by antigen-affinity chromatography.
Conjugation	Unconjugated

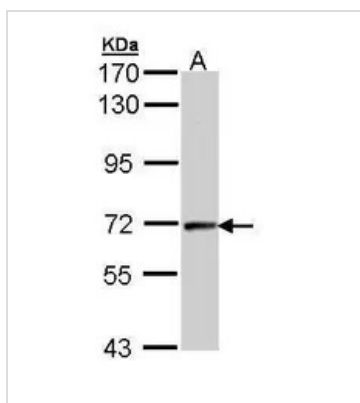
Note

For laboratory research use only. Not for any clinical, therapeutic, or diagnostic use in humans or animals. Not for animal or human consumption.

Purchasers shall not, and agree not to enable third parties to, analyze, copy, reverse engineer or otherwise attempt to determine the structure or sequence of the product.



For full product information, images and publications, please visit our [website](#).

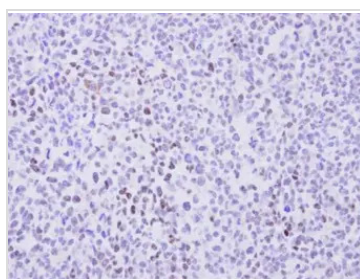
DATA IMAGES

GTX111944 WB Image

Sample (30 ug of whole cell lysate)

A: Hep G2 (GTX27900)

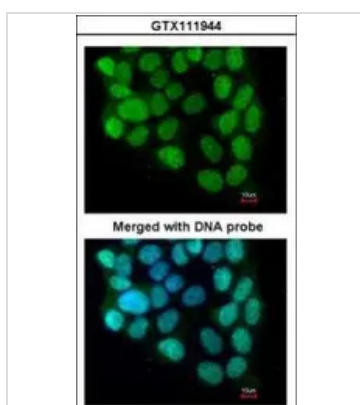
7.5% SDS PAGE

GTX111944 diluted at 1:1000

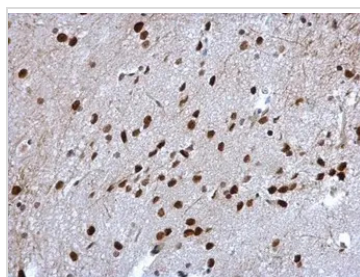

GTX111944 IHC-P Image

Immunohistochemical analysis of paraffin-embedded H1299 Xenograft, using cyclin T2(GTX111944) antibody at 1:100 dilution.

Antigen Retrieval: Citrate buffer, pH 6.0, 15 min


GTX111944 ICC/IF Image

Immunofluorescence analysis of paraformaldehyde-fixed A431, using cyclin T2(GTX111944) antibody at 1:200 dilution.


GTX111944 IHC-P Image

Cyclin T2 antibody [C2C3], C-term detects cyclin T2 protein at nucleus in mouse brain by immunohistochemical analysis.

Sample: Paraffin-embedded mouse brain.

Cyclin T2 antibody [C2C3], C-term (GTX111944) diluted at 1:500.

Antigen Retrieval: Citrate buffer, pH 6.0, 15 min



For full product information, images and publications, please visit our [website](https://www.genetex.com).