

Leukotriene B4 Receptor antibody [202/7B1] (FITC)

Cat. No. GTX11207

Host	Mouse
Clonality	Monoclonal
Isotype	IgG2a
Applications	IHC-Fr, FCM
Reactivity	Human

Package
50 µg

Applications

Application Note

*Optimal dilutions/concentrations should be determined by the researcher.

Suggested dilution	Recommended dilution
IHC-Fr	Assay dependent
FCM	Neat

Note : Use 10µl of the suggested working dilution to label 10⁶ cells in 100µl.

Not tested in other applications.

Properties

Form	Liquid
Buffer	PBS, 1% BSA
Preservative	0.09% Sodium azide
Storage	Store as concentrated solution. Centrifuge briefly prior to opening vial. For short-term storage (1-2 weeks), store at 4°C. For long-term storage, aliquot and store at -20°C or below. Avoid multiple freeze-thaw cycles. Protect from light.
Concentration	0.1 mg/ml (Please refer to the vial label for the specific concentration.)
Immunogen	HeLa cell transfectants expressing human Leukotriene B4 Receptor.
Purification	Protein G purified From tissue culture supernatant
Conjugation	Fluorescein isothiocyanate (FITC) Wavelength

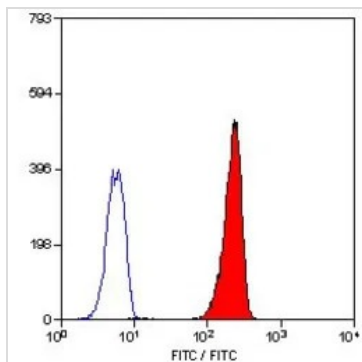
Note

For laboratory research use only. Not for any clinical, therapeutic, or diagnostic use in humans or animals. Not for animal or human consumption.

Purchasers shall not, and agree not to enable third parties to, analyze, copy, reverse engineer or otherwise attempt to determine the structure or sequence of the product.



For full product information, images and publications, please visit our [website](#).

DATA IMAGES

GTX11207 FCM Image

FACS analysis of human peripheral blood granulocytes using GTX11207 Leukotriene B4 Receptor antibody [202/7B1] (FITC).



For full product information, images and publications, please visit our [website](#).

Date 2026 / 02 / 02 Page 2 of 2