

Fibroblasts/Epithelial antibody [D7-FIB]

Cat. No. GTX11208

| | |
|--------------|-----------------|
| Host | Mouse |
| Clonality | Monoclonal |
| Isotype | IgG2a |
| Applications | IHC-Fr, FCM, IP |
| Reactivity | Human |

Package
100 µg

Applications

Application Note

*Optimal dilutions/concentrations should be determined by the researcher.

| Suggested dilution | Recommended dilution |
|--------------------|----------------------|
| IHC-Fr | 1/100 |
| FCM | 1/50-1/200 |
| IP | Assay dependent |

Note : The epitope recognised by this antibody is reported to be sensitive to formaldehyde fixation and tissue processing. Recommend the use of acetone fixation for frozen sections.

Use 10µl of the suggested working dilution to label 10⁶ cells in 100µl.

Not tested in other applications.

Product Note

Clone D7-FIB has also been found to bind to epithelium, myoepithelium, smooth muscle and some leucocytes. This antibody is useful as a cell membrane marker to characterize chondrocyte differentiation giving a positive reaction with dedifferentiated human chondrocytes, and negative with differentiated chondrocytes (van Osch et al. 2001).

Properties

| | |
|---------------|--|
| Form | Liquid |
| Buffer | PBS |
| Preservative | 0.09% Sodium azide |
| Storage | Store as concentrated solution. Centrifuge briefly prior to opening vial. For short-term storage (1-2 weeks), store at 4°C. For long-term storage, aliquot and store at -20°C or below. Avoid multiple freeze-thaw cycles. |
| Concentration | 1.0 mg/ml (Please refer to the vial label for the specific concentration.) |
| Immunogen | Human foreskin fibroblasts. |
| Purification | Protein G purified From tissue culture supernatant |
| Conjugation | Unconjugated |

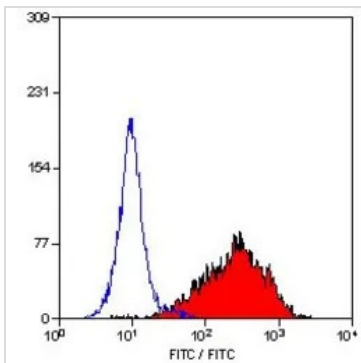


For full product information, images and publications, please visit our [website](#).

For laboratory research use only. Not for any clinical, therapeutic, or diagnostic use in humans or animals. Not for animal or human consumption.

Note
 Purchasers shall not, and agree not to enable third parties to, analyze, copy, reverse engineer or otherwise attempt to determine the structure or sequence of the product.

DATA IMAGES



GTX11208 FCM Image

FACS analysis of KG1 cells using GTX11208 Fibroblasts/Epithelial antibody [D7-FIB].



For full product information, images and publications, please visit our [website](#).