

CA150 antibody

Cat. No. GTX112099

Host	Rabbit
Clonality	Polyclonal
Isotype	IgG
Applications	WB, ICC/IF, IHC-P
Reactivity	Human, Mouse, Rat

Package
100 µl, 25 µl

Applications

Application Note

*Optimal dilutions/concentrations should be determined by the researcher.

Suggested dilution	Recommended dilution
WB	1:500-1:3000
ICC/IF	1:100-1:1000
IHC-P	1:100-1:1000

Not tested in other applications.

Calculated MW 124 kDa. ([Note](#))

Properties

Form	Liquid
Buffer	0.1M Tris, 0.1M Glycine, 20% Glycerol
Preservative	0.01% Thimerosal
Storage	Store as concentrated solution. Centrifuge briefly prior to opening vial. For short-term storage (1-2 weeks), store at 4°C. For long-term storage, aliquot and store at -20°C or below. Avoid multiple freeze-thaw cycles.
Concentration	1.02 mg/ml (Please refer to the vial label for the specific concentration.)
Immunogen	Recombinant protein encompassing a sequence within the center region of human CA150. The exact sequence is proprietary.
Purification	Purified by antigen-affinity chromatography.
Conjugation	Unconjugated

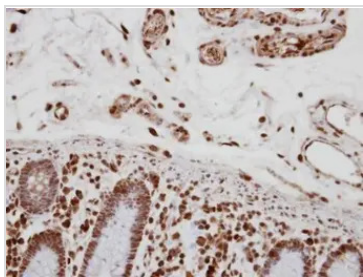
Note For laboratory research use only. Not for any clinical, therapeutic, or diagnostic use in humans or animals. Not for animal or human consumption.

Purchasers shall not, and agree not to enable third parties to, analyze, copy, reverse engineer or otherwise attempt to determine the structure or sequence of the product.



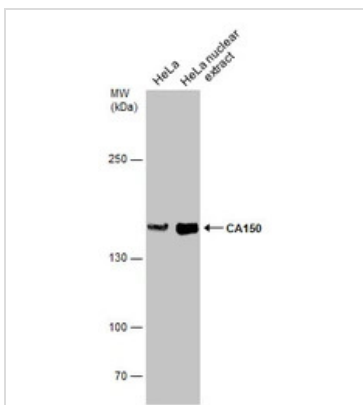
For full product information, images and publications, please visit our [website](#).

DATA IMAGES

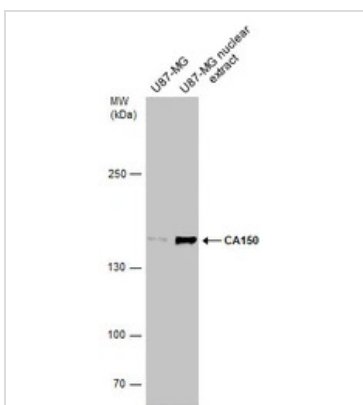
**GTX112099 IHC-P Image**

Immunohistochemical analysis of paraffin-embedded human colon, using CA150(GTX112099) antibody at 1:250 dilution.

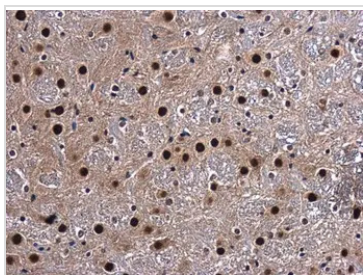
Antigen Retrieval: Citrate buffer, pH 6.0, 15 min

**GTX112099 WB Image**

HeLa whole cell and nuclear extracts (30 µg) were separated by 5% SDS-PAGE, and the membrane was blotted with CA150 antibody (GTX112099) diluted at 1:500.

**GTX112099 WB Image**

U87-MG whole cell and nuclear extracts (30 µg) were separated by 5% SDS-PAGE, and the membrane was blotted with CA150 antibody (GTX112099) diluted at 1:500.

**GTX112099 IHC-P Image**

CA150 antibody detects CA150 protein at nucleus in mouse brain by immunohistochemical analysis.

Sample: Paraffin-embedded mouse brain.

CA150 antibody (GTX112099) diluted at 1:500.

Antigen Retrieval: Citrate buffer, pH 6.0, 15 min



For full product information, images and publications, please visit our [website](#).