

pan Cytokeratin antibody [C-11] (FITC)

Cat. No. GTX11212

| | |
|-------------|---|
| Host | Mouse |
| Clonality | Monoclonal |
| Isotype | IgG1 |
| Application | WB, ICC/IF, IHC-P, FACS |
| Reactivity | Human, Mouse, Rat, Bovine, Frog, Kangaroo rat |

Reference (15)
Package
100 µl

APPLICATION

Application Note

*Optimal dilutions/concentrations should be determined by the researcher.

| Suggested dilution | Recommended dilution |
|--------------------|----------------------|
| WB | Assay dependent |
| ICC/IF | 1:50 |
| IHC-P | 1:50 |
| FACS | Assay dependent |

Not tested in other applications.

PROPERTIES

| | |
|---------------|--|
| Form | Liquid |
| Buffer | PBS, 1% BSA |
| Preservative | 15mM Sodium azide |
| Storage | Store as concentrated solution. Centrifuge briefly prior to opening vial. For short-term storage (1-2 weeks), store at 4°C. For long-term storage, aliquot and store at -20°C or below. Avoid multiple freeze-thaw cycles. Protect from light. |
| Concentration | Batch dependent (Please refer to the vial label for the specific concentration.) |
| Immunogen | keratin-enriched preparation from cultured human epidermoid carcinoma cell line A431. |
| Purification | Purified immunoglobulin |
| Conjugation | Fluorescein isothiocyanate (FITC) |

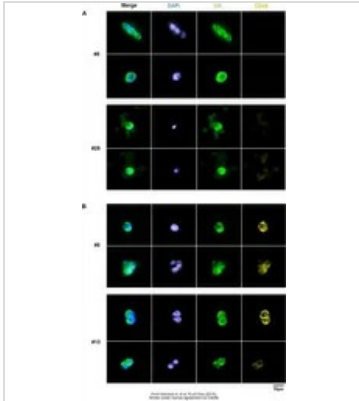
Note

For laboratory research use only. Not for any clinical, therapeutic, or diagnostic use in humans or animals. Not for animal or human consumption.

Purchasers shall not, and agree not to enable third parties to, analyze, copy, reverse engineer or otherwise attempt to determine the structure or sequence of the product.



For full product information, images and publications, please visit our [website](#).

DATA IMAGES

GTX11212 ICC/IF Image

The data was published in the journal PLoS One in 2015. [PMID: 26695635](https://pubmed.ncbi.nlm.nih.gov/26695635/)



For full product information, images and publications, please visit our [website](https://www.genetex.com).