

Myelin basic protein antibody [22]

Cat. No. GTX11223

Host	Mouse
Clonality	Monoclonal
Isotype	IgG2b
Applications	IHC-P, IHC-Fr
Reactivity	Human

Package
1 ml

Applications

Application Note

*Optimal dilutions/concentrations should be determined by the researcher.

Suggested dilution	Recommended dilution
IHC-P	Assay dependent
IHC-Fr	Assay dependent

Not tested in other applications.

Product Note This antibody recognizes an epitope of myelin basic protein between amino acids 84-89.

Properties

Form	Liquid
Buffer	Tissue culture supernatant
Preservative	0.09% Sodium azide
Storage	Store as concentrated solution. Centrifuge briefly prior to opening vial. For short-term storage (1-2 weeks), store at 4°C. For long-term storage, aliquot and store at -20°C or below. Avoid multiple freeze-thaw cycles.
Immunogen	Human myelin basic protein
Purification	Tissue Culture Supernatant
Conjugation	Unconjugated

Note

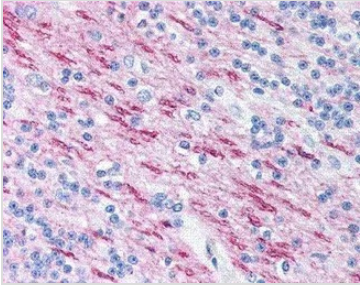
For laboratory research use only. Not for any clinical, therapeutic, or diagnostic use in humans or animals. Not for animal or human consumption.

Purchasers shall not, and agree not to enable third parties to, analyze, copy, reverse engineer or otherwise attempt to determine the structure or sequence of the product.



For full product information, images and publications, please visit our [website](#).

DATA IMAGES

**GTX11223 IHC-P Image**

IHC analysis of white matter in human brain tissue using GTX11223 Myelin basic protein antibody [22].



For full product information, images and publications, please visit our [website](#).