

TCP1 beta antibody [C1C3]

Cat. No. GTX112283

Host	Rabbit
Clonality	Polyclonal
Isotype	IgG
Applications	WB, IHC-P
Reactivity	Human, Mouse

References (1)

★★★★★ Review (1)

Package

100 µl, 25 µl

Applications

Application Note

*Optimal dilutions/concentrations should be determined by the researcher.

Suggested dilution	Recommended dilution
WB	1:500-1:3000
IHC-P	1:100-1:1000

Not tested in other applications.

Calculated MW 57 kDa. ([Note](#))

Properties

Form	Liquid
Buffer	0.1M Tris, 0.1M Glycine, 10% Glycerol
Preservative	0.01% Thimerosal
Storage	Store as concentrated solution. Centrifuge briefly prior to opening vial. For short-term storage (1-2 weeks), store at 4°C. For long-term storage, aliquot and store at -20°C or below. Avoid multiple freeze-thaw cycles.
Concentration	1 mg/ml (Please refer to the vial label for the specific concentration.)
Immunogen	Recombinant protein encompassing a sequence within the center region of human TCP1 beta. The exact sequence is proprietary.
Purification	Purified by antigen-affinity chromatography.
Conjugation	Unconjugated

Note

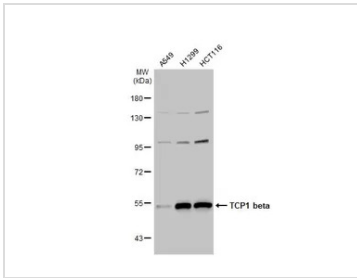
For laboratory research use only. Not for any clinical, therapeutic, or diagnostic use in humans or animals. Not for animal or human consumption.

Purchasers shall not, and agree not to enable third parties to, analyze, copy, reverse engineer or otherwise attempt to determine the structure or sequence of the product.



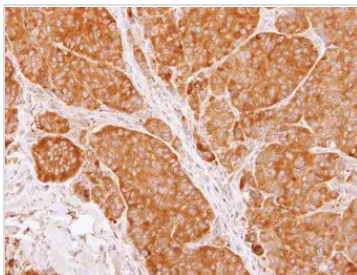
For full product information, images and publications, please visit our [website](#).

DATA IMAGES



GTX112283 WB Image

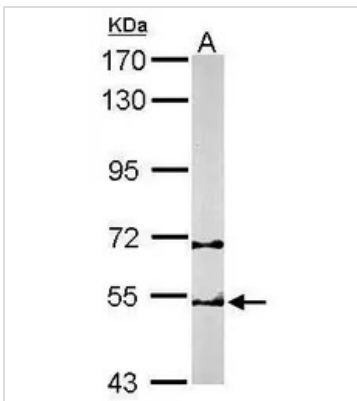
Various whole cell extracts (30 μ g) were separated by 7.5% SDS-PAGE, and the membrane was blotted with TCP1 beta antibody [C1C3] (GTX112283) diluted at 1:1000. The HRP-conjugated anti-rabbit IgG antibody (GTX213110-01) was used to detect the primary antibody.



GTX112283 IHC-P Image

Immunohistochemical analysis of paraffin-embedded SW480 xenograft, using TCP1 beta(GTX112283) antibody at 1:100 dilution.

Antigen Retrieval: Citrate buffer, pH 6.0, 15 min



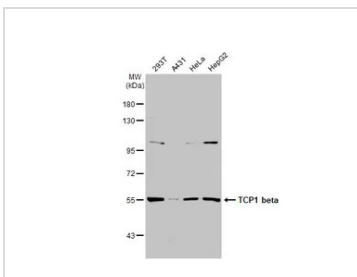
GTX112283 WB Image

Sample (50 μ g of whole cell lysate)

A: Mouse brain

7.5% SDS PAGE

GTX112283 diluted at 1:1000



GTX112283 WB Image

Various whole cell extracts (30 μ g) were separated by 7.5% SDS-PAGE, and the membrane was blotted with TCP1 beta antibody [C1C3] (GTX112283) diluted at 1:1000. The HRP-conjugated anti-rabbit IgG antibody (GTX213110-01) was used to detect the primary antibody.



For full product information, images and publications, please visit our [website](https://www.genetex.com).