

RBM14 antibody [N1N2], N-term

Cat. No. GTX112293

Host	Rabbit
Clonality	Polyclonal
Isotype	IgG
Applications	WB, ICC/IF, IHC-Wm
Reactivity	Human, Zebrafish

References (3)

Package

100 µl, 25 µl

Applications

Application Note

*Optimal dilutions/concentrations should be determined by the researcher.

Suggested dilution	Recommended dilution
WB	1:1000-1:10000
ICC/IF	Assay dependent
IHC-Wm	Assay dependent

Not tested in other applications.

Calculated MW 69 kDa. ([Note](#))**Product Note** KO/KD validation is based on published data (PMID: 36339704).

Properties

Form	Liquid
Buffer	PBS, 1% BSA, 20% Glycerol
Preservative	0.01% Thimerosal
Storage	Store as concentrated solution. Centrifuge briefly prior to opening vial. For short-term storage (1-2 weeks), store at 4°C. For long-term storage, aliquot and store at -20°C or below. Avoid multiple freeze-thaw cycles.
Concentration	1 mg/ml (Please refer to the vial label for the specific concentration.)
Immunogen	Recombinant protein encompassing a sequence within the N-terminus region of human RBM14. The exact sequence is proprietary.
Purification	Purified by antigen-affinity chromatography.
Conjugation	Unconjugated

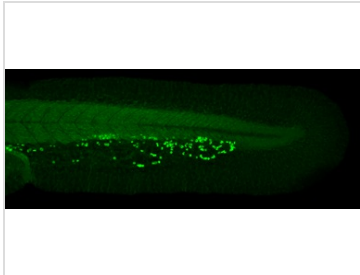


For full product information, images and publications, please visit our [website](#).

For laboratory research use only. Not for any clinical, therapeutic, or diagnostic use in humans or animals. Not for animal or human consumption.

Note
 Purchasers shall not, and agree not to enable third parties to, analyze, copy, reverse engineer or otherwise attempt to determine the structure or sequence of the product.

DATA IMAGES

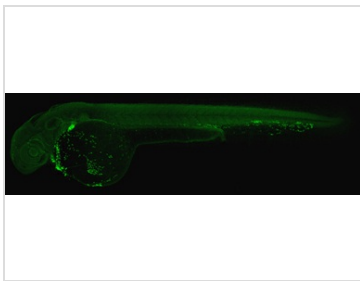


GTX112293 IHC-Wm Image

Zgc:85696 antibody detects Zgc:85696 protein on zebrafish by whole mount immunohistochemical analysis.

Sample: 2 days-post-fertilization zebrafish embryo.

Zgc:85696 antibody (GTX112293) dilution: 1:50.

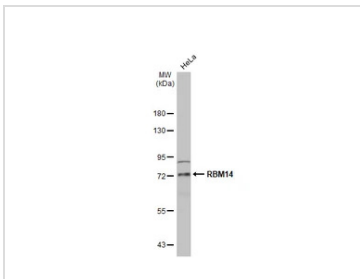


GTX112293 IHC-Wm Image

Zgc:85696 antibody detects Zgc:85696 protein on zebrafish by whole mount immunohistochemical analysis.

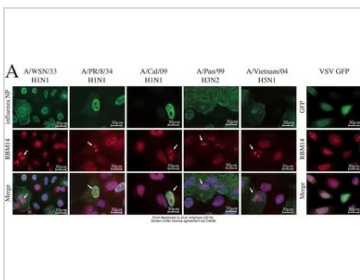
Sample: 2 days-post-fertilization zebrafish embryo.

Zgc:85696 antibody (GTX112293) dilution: 1:50.



GTX112293 WB Image

Whole cell extract (30 µg) was separated by 7.5% SDS-PAGE, and the membrane was blotted with RBM14 antibody [N1N2], N-term (GTX112293) diluted at 1:5000. The HRP-conjugated anti-rabbit IgG antibody (GTX213110-01) was used to detect the primary antibody.



GTX112293 ICC/IF Image

The data was published in the 2018 in mSphere. [PMID: 30429226](https://pubmed.ncbi.nlm.nih.gov/30429226/)



For full product information, images and publications, please visit our [website](http://www.genetex.com).