

## MYPT1 antibody

Cat. No. GTX112344

Host	Rabbit
Clonality	Polyclonal
Isotype	IgG
Applications	ICC/IF
Reactivity	Human

Package  
100 µl, 25 µl

## Applications

## Application Note

\*Optimal dilutions/concentrations should be determined by the researcher.

Suggested dilution	Recommended dilution
ICC/IF	1:100-1:1000

Not tested in other applications.

## Properties

Form	Liquid
Buffer	PBS, 20% Glycerol
Preservative	0.01% Thimerosal
Storage	Store as concentrated solution. Centrifuge briefly prior to opening vial. For short-term storage (1-2 weeks), store at 4°C. For long-term storage, aliquot and store at -20°C or below. Avoid multiple freeze-thaw cycles.
Concentration	1 mg/ml (Please refer to the vial label for the specific concentration.)
Immunogen	Recombinant protein encompassing a sequence within the center region of human MYPT1. The exact sequence is proprietary.
Purification	Purified by antigen-affinity chromatography.
Conjugation	Unconjugated

## Note

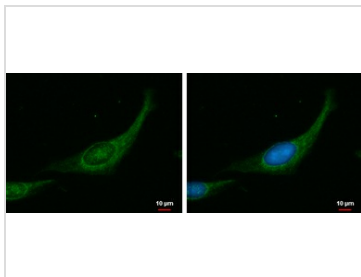
For laboratory research use only. Not for any clinical, therapeutic, or diagnostic use in humans or animals. Not for animal or human consumption.

Purchasers shall not, and agree not to enable third parties to, analyze, copy, reverse engineer or otherwise attempt to determine the structure or sequence of the product.



For full product information, images and publications, please visit our [website](#).

## DATA IMAGES



### GTX112344 ICC/IF Image

MYPT1 antibody detects MYPT1 protein at cytoplasm by immunofluorescent analysis.

Sample: RD cells were fixed in ice-cold MeOH for 5 min.

Green: MYPT1 protein stained by MYPT1 antibody (GTX112344) diluted at 1:1000.

Blue: Hoechst 33342 staining.



For full product information, images and publications, please visit our [website](#).