

GBP3 antibody [N1C1]

Cat. No. GTX112554

Host	Rabbit
Clonality	Polyclonal
Isotype	IgG
Applications	WB, ICC/IF, IHC-P
Reactivity	Human

Package
100 µl, 25 µl

Applications

Application Note

*Optimal dilutions/concentrations should be determined by the researcher.

Suggested dilution	Recommended dilution
WB	1:500-1:3000
ICC/IF	1:100-1:1000
IHC-P	1:100-1:1000

Not tested in other applications.

Calculated MW 68 kDa. ([Note](#))

Properties

Form	Liquid
Buffer	0.1M Tris, 0.1M Glycine, 10% Glycerol
Preservative	0.01% Thimerosal
Storage	Store as concentrated solution. Centrifuge briefly prior to opening vial. For short-term storage (1-2 weeks), store at 4°C. For long-term storage, aliquot and store at -20°C or below. Avoid multiple freeze-thaw cycles.
Concentration	0.81 mg/ml (Please refer to the vial label for the specific concentration.)
Immunogen	Recombinant protein encompassing a sequence within the center region of human GBP3. The exact sequence is proprietary.
Purification	Purified by antigen-affinity chromatography.
Conjugation	Unconjugated

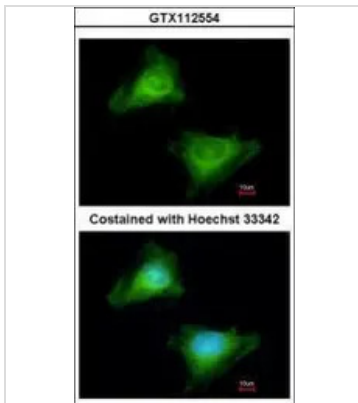
Note

For laboratory research use only. Not for any clinical, therapeutic, or diagnostic use in humans or animals. Not for animal or human consumption.

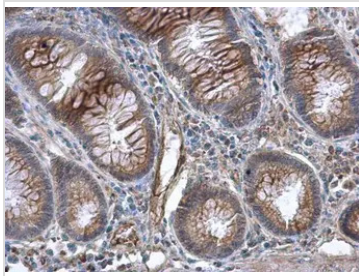
Purchasers shall not, and agree not to enable third parties to, analyze, copy, reverse engineer or otherwise attempt to determine the structure or sequence of the product.



For full product information, images and publications, please visit our [website](#).

DATA IMAGES

GTx112554 ICC/IF Image

Immunofluorescence analysis of methanol-fixed HeLa, using Guanylate binding protein 3(GTx112554) antibody at 1:200 dilution.

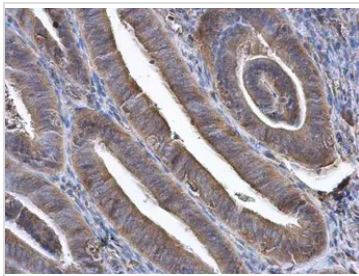

GTx112554 IHC-P Image

GBP3 antibody [N1C1] detects GBP3 protein at cytoplasm in human colon by immunohistochemical analysis.

Sample: Paraffin-embedded human colon.

GBP3 antibody [N1C1] (GTx112554) diluted at 1:500.

Antigen Retrieval: Citrate buffer, pH 6.0, 15 min

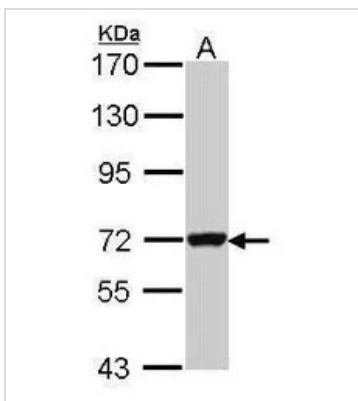

GTx112554 IHC-P Image

GBP3 antibody [N1C1] detects GBP3 protein at cytoplasm in human endometrium by immunohistochemical analysis.

Sample: Paraffin-embedded human endometrium.

GBP3 antibody [N1C1] (GTx112554) diluted at 1:500.

Antigen Retrieval: Citrate buffer, pH 6.0, 15 min


GTx112554 WB Image

Sample (30 ug of whole cell lysate)

A: HeLa

7.5% SDS PAGE

GTx112554 diluted at 1:1000



For full product information, images and publications, please visit our [website](http://www.genetex.com).