

Centrin 1 antibody

Cat. No. GTX11257

Host	Rabbit
Clonality	Polyclonal
Isotype	IgG
Applications	WB, ICC/IF
Reactivity	Human, Mouse

Package
100 µl

Applications

Application Note

*Optimal dilutions/concentrations should be determined by the researcher.

Suggested dilution	Recommended dilution
WB	1:2,000
ICC/IF	Assay dependent

Not tested in other applications.

Calculated MW 20 kDa. ([Note](#))

Properties

Form	Liquid
Buffer	PBS, 1% BSA
Preservative	15mM Sodium azide
Storage	Store as concentrated solution. Centrifuge briefly prior to opening vial. For short-term storage (1-2 weeks), store at 4°C. For long-term storage, aliquot and store at -20°C or below. Avoid multiple freeze-thaw cycles.
Concentration	Batch dependent (Please refer to the vial label for the specific concentration.)
Immunogen	synthetic peptide corresponding to the C-terminus of human centrin 1 (amino acids 157-172). The sequence is highly conserved in centrin 1 of many species, e.g. mouse, Drosophila, and Xenopus. It is also found in human and mouse centrin 2, but is not found in centrin 3.
Purification	Purified by affinity chromatography
Conjugation	Unconjugated

Note

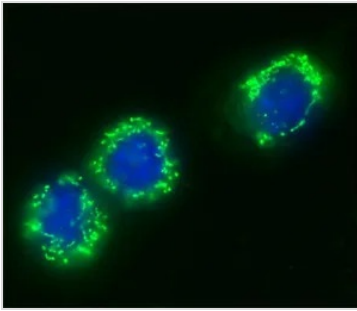
For laboratory research use only. Not for any clinical, therapeutic, or diagnostic use in humans or animals. Not for animal or human consumption.

Purchasers shall not, and agree not to enable third parties to, analyze, copy, reverse engineer or otherwise attempt to determine the structure or sequence of the product.



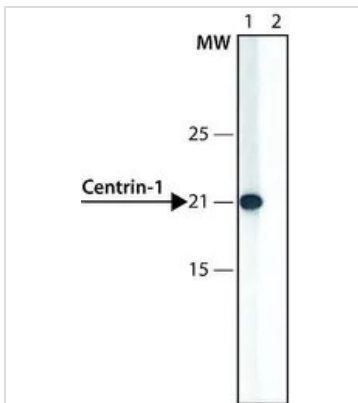
For full product information, images and publications, please visit our [website](#).

DATA IMAGES



GTX11257 ICC/IF Image

ICC/IF analysis of NIH3T3 cells using GTX11257 Centrin 1 antibody at 6 µg/mL (green) with DAPI (blue).

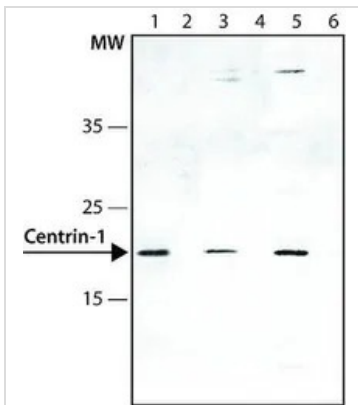


GTX11257 WB Image

WB analysis of HEK-293T cells overexpressing human centrin-1 using GTX11257 Centrin 1 antibody.

Lane 1 : Antibody 0.3 µg/mL

Lane 2 : Antibody 0.3 µg/mL + centrin1 immunizing peptide (human, 157-172)

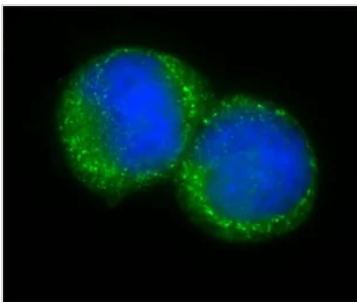


GTX11257 WB Image

WB analysis of (Lane 1 and 2) human HT-29, (Lane 3 and 4) HEK-293T, (Lane 5 and 6) HeLa cells using GTX11257 Centrin 1 antibody.

(Lane 1,3,5) Antibody 0.3 µg/mL

(Lane 2,4,6) Antibody 0.3 µg/mL + centrin1 immunizing peptide



GTX11257 ICC/IF Image

ICC/IF analysis of HeLa cells using GTX11257 Centrin 1 antibody at 6 µg/mL (green) with DAPI (blue).



For full product information, images and publications, please visit our [website](https://www.genetex.com).