

HHIP antibody [N3C2], Internal

Cat. No. GTX112584

Host	Rabbit
Clonality	Polyclonal
Isotype	IgG
Applications	WB, ICC/IF, IHC-P
Reactivity	Human, Mouse, Chicken

References (1)

Package

100 µl, 25 µl

Applications

Application Note

*Optimal dilutions/concentrations should be determined by the researcher.

Suggested dilution	Recommended dilution
WB	1:500-1:3000
ICC/IF	1:100-1:1000
IHC-P	1:100-1:1000

Not tested in other applications.

Calculated MW 79 kDa. ([Note](#))

Properties

Form	Liquid
Buffer	PBS, 20% Glycerol
Preservative	0.025% ProClin 300
Storage	Store as concentrated solution. Centrifuge briefly prior to opening vial. For short-term storage (1-2 weeks), store at 4°C. For long-term storage, aliquot and store at -20°C or below. Avoid multiple freeze-thaw cycles.
Concentration	1.33 mg/ml (Please refer to the vial label for the specific concentration.)
Immunogen	Recombinant protein encompassing a sequence within the center region of human HHIP. The exact sequence is proprietary.
Purification	Purified by antigen-affinity chromatography.
Conjugation	Unconjugated

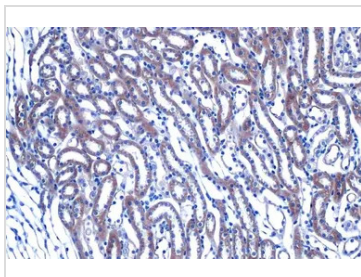
Note

For laboratory research use only. Not for any clinical, therapeutic, or diagnostic use in humans or animals. Not for animal or human consumption.

Purchasers shall not, and agree not to enable third parties to, analyze, copy, reverse engineer or otherwise attempt to determine the structure or sequence of the product.



For full product information, images and publications, please visit our [website](#).

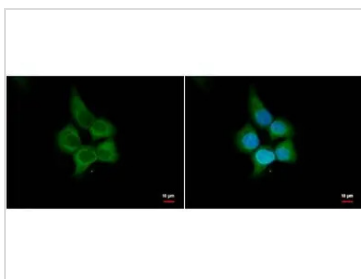
DATA IMAGES

GTx112584 IHC-P Image

HHIP antibody [N3C2], Internal detects HHIP protein at cytoplasm by immunohistochemical analysis.

Sample: Paraffin-embedded mouse kidney.

HHIP stained by HHIP antibody [N3C2], Internal (GTx112584) diluted at 1:500.

Antigen Retrieval: Citrate buffer, pH 6.0, 15 min


GTx112584 ICC/IF Image

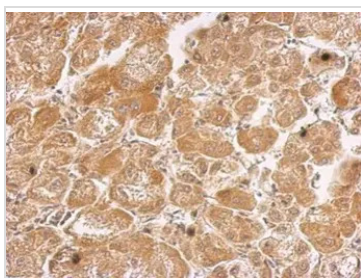
HHIP antibody [N3C2], Internal antibody detects HHIP protein by immunofluorescent analysis.

Sample: A431 cells were fixed in 4% paraformaldehyde for 15 min.

Green: HHIP protein stained by HHIP antibody [N3C2], Internal antibody (GTx112584) diluted at 1:500.

Blue: Hoechst 33342 staining.

Scale bar = 10 μ m.

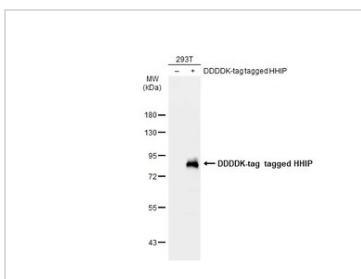

GTx112584 IHC-P Image

HHIP antibody [N3C2], Internal detects HHIP protein at cytosol on human hepatoma by immunohistochemical analysis.

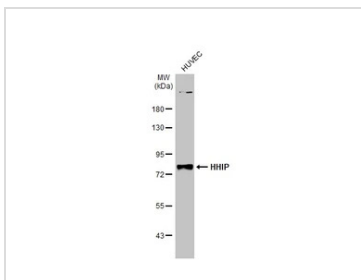
Sample: Paraffin-embedded hepatoma.

HHIP antibody [N3C2], Internal (GTx112584) dilution: 1:500.

Antigen Retrieval: Trilogy™ (EDTA based, pH 8.0) buffer, 15min


GTx112584 WB Image

Non-transfected (–) and transfected (+) 293T whole cell extracts (30 μ g) were separated by 7.5% SDS-PAGE, and the membrane was blotted with HHIP antibody [N3C2], Internal (GTx112584) diluted at 1:5000. The HRP-conjugated anti-rabbit IgG antibody (GTx213110-01) was used to detect the primary antibody.


GTx112584 WB Image

Whole cell extract (30 μ g) was separated by 7.5% SDS-PAGE, and the membrane was blotted with HHIP antibody [N3C2], Internal (GTx112584) diluted at 1:1000. The HRP-conjugated anti-rabbit IgG antibody (GTx213110-01) was used to detect the primary antibody.



For full product information, images and publications, please visit our [website](https://www.genetex.com).