

KIF3A antibody

Cat. No. GTX11259

Host	Rabbit
Clonality	Polyclonal
Isotype	IgG
Applications	WB, IHC-P
Reactivity	Human, Mouse, Rat

Package

50 µl

Applications

Application Note

*Optimal dilutions/concentrations should be determined by the researcher.

Suggested dilution	Recommended dilution
WB	1:2,000
IHC-P	1:100

Not tested in other applications.

Calculated MW 80 kDa. ([Note](#))

Properties

Form	Liquid
Buffer	PBS
Preservative	15mM Sodium azide
Storage	Store as concentrated solution. Centrifuge briefly prior to opening vial. For short-term storage (1-2 weeks), store at 4°C. For long-term storage, aliquot and store at -20°C or below. Avoid multiple freeze-thaw cycles.
Concentration	Batch dependent (Please refer to the vial label for the specific concentration.)
Immunogen	synthetic peptide corresponding to the C-terminus of mouse KIF3A (amino acids 682-701) conjugated to KLH.
Purification	IgG fraction
Conjugation	Unconjugated

Note

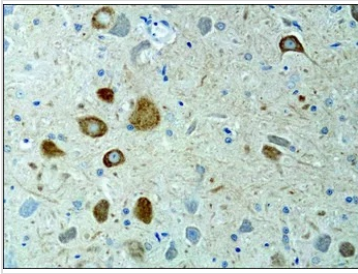
For laboratory research use only. Not for any clinical, therapeutic, or diagnostic use in humans or animals. Not for animal or human consumption.

Purchasers shall not, and agree not to enable third parties to, analyze, copy, reverse engineer or otherwise attempt to determine the structure or sequence of the product.



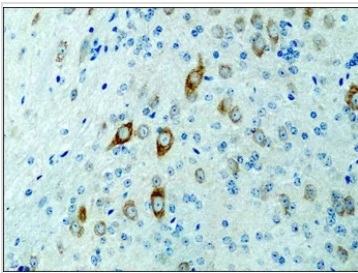
For full product information, images and publications, please visit our [website](#).

DATA IMAGES



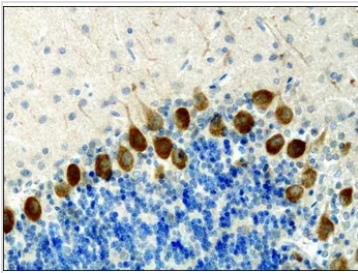
GTX11259 IHC-P Image

IHC-P analysis of rat brain tissue using GTX11259 KIF3A antibody at 0.1 µg/mL.



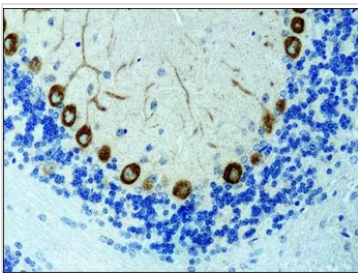
GTX11259 IHC-P Image

IHC-P analysis of mouse brain tissue using GTX11259 KIF3A antibody at 0.4 µg/mL.



GTX11259 IHC-P Image

IHC-P analysis of rat brain tissue using GTX11259 KIF3A antibody at 0.1 µg/mL.



GTX11259 IHC-P Image

IHC-P analysis of mouse brain tissue using GTX11259 KIF3A antibody at 0.4 µg/mL.



For full product information, images and publications, please visit our [website](#).