

eIF4B antibody [N1N2], N-term

Cat. No. GTX112612

Host	Rabbit
Clonality	Polyclonal
Isotype	IgG
Application	WB, ICC/IF, IHC-P
Reactivity	Human, Mouse

Package
100 µl, 25 µl

APPLICATION

Application Note

*Optimal dilutions/concentrations should be determined by the researcher.

Suggested dilution	Recommended dilution
WB	1:500-1:10000
ICC/IF	1:100-1:1000
IHC-P	1:100-1:1000

Not tested in other applications.

Calculated MW 69 kDa. ([Note](#))

PROPERTIES

Form	Liquid
Buffer	PBS, 1% BSA, 20% Glycerol
Preservative	0.01% Thimerosal
Storage	Store as concentrated solution. Centrifuge briefly prior to opening vial. For short-term storage (1-2 weeks), store at 4°C. For long-term storage, aliquot and store at -20°C or below. Avoid multiple freeze-thaw cycles.
Concentration	0.16 mg/ml (Please refer to the vial label for the specific concentration.)
Immunogen	Recombinant protein encompassing a sequence within the N-terminus region of human eIF4B. The exact sequence is proprietary.
Purification	Purified by antigen-affinity chromatography.
Conjugation	Unconjugated

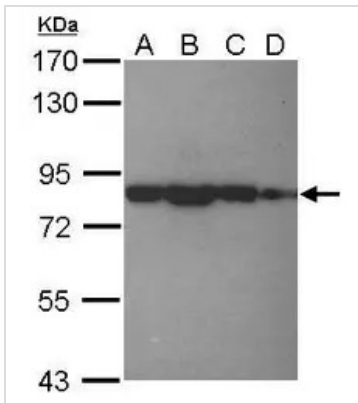
Note For laboratory research use only. Not for any clinical, therapeutic, or diagnostic use in humans or animals. Not for animal or human consumption.

Purchasers shall not, and agree not to enable third parties to, analyze, copy, reverse engineer or otherwise attempt to determine the structure or sequence of the product.



For full product information, images and publications, please visit our [website](#).

DATA IMAGES



GTX112612 WB Image

Sample (30 ug of whole cell lysate)

A: NT2D1

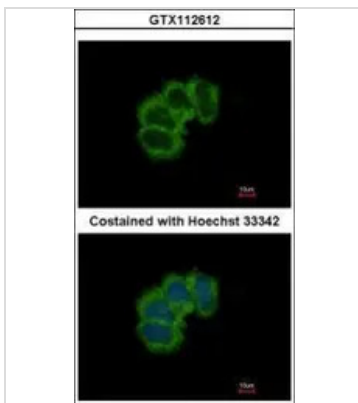
B: IMR32

C: U87-MG

D: MCF-7

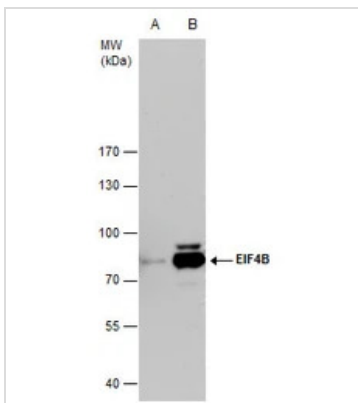
7.5% SDS PAGE

GTX112612 diluted at 1:1000



GTX112612 ICC/IF Image

Immunofluorescence analysis of paraformaldehyde-fixed MCF-7, using EIF4B(GTX112612) antibody at 1:500 dilution.



GTX112612 WB Image

EIF4B antibody detects EIF4B protein by western blot analysis.

A. 30 μ g 293T whole cell extract

B. 30 μ g whole cell extract of human EIF4B-transfected 293T cells

7.5 % SDS-PAGE

EIF4B antibody (GTX112612) dilution: 1:5000



For full product information, images and publications, please visit our [website](https://www.genetex.com).