

# Vimentin antibody

**Cat. No. GTX112661**

<b>Host</b>	Rabbit
<b>Clonality</b>	Polyclonal
<b>Isotype</b>	IgG
<b>Application</b>	WB, ICC/IF, IHC-P, ELISA, Sandwich ELISA
<b>Reactivity</b>	Human

Reference ( 23 )

Package

100 µl, 25 µl

## APPLICATION

### Application Note

\*Optimal dilutions/concentrations should be determined by the researcher.

Suggested dilution	Recommended dilution
WB	1:500-1:3000
ICC/IF	1:100-1:1000
IHC-P	1:100-1:1000
ELISA	Assay dependent
Sandwich ELISA	Assay dependent

**Note : Capture : GTX629744 / GTX629743, Detection : GTX112661**

Not tested in other applications.

**Calculated MW** 54 kDa. ( [Note](#) )

## PROPERTIES

<b>Form</b>	Liquid
<b>Buffer</b>	PBS, 20% Glycerol
<b>Preservative</b>	0.025% ProClin 300
<b>Storage</b>	Store as concentrated solution. Centrifuge briefly prior to opening vial. For short-term storage (1-2 weeks), store at 4°C. For long-term storage, aliquot and store at -20°C or below. Avoid multiple freeze-thaw cycles.
<b>Concentration</b>	0.95 mg/ml (Please refer to the vial label for the specific concentration.)
<b>Immunogen</b>	Recombinant protein encompassing a sequence within the center region of human Vimentin. The exact sequence is proprietary.
<b>Purification</b>	Purified by antigen-affinity chromatography.
<b>Conjugation</b>	Unconjugated

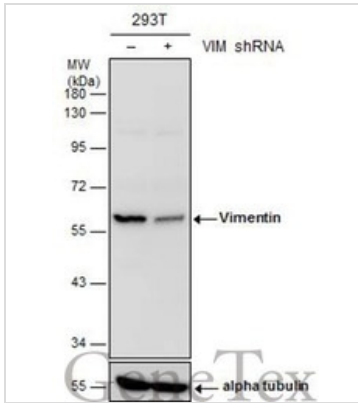


For full product information, images and publications, please visit our [website](#).

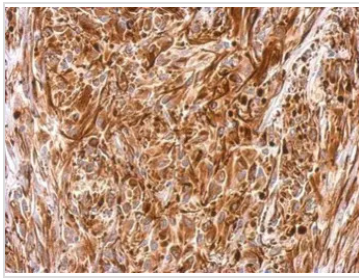
For laboratory research use only. Not for any clinical, therapeutic, or diagnostic use in humans or animals. Not for animal or human consumption.

**Note**

Purchasers shall not, and agree not to enable third parties to, analyze, copy, reverse engineer or otherwise attempt to determine the structure or sequence of the product.

**DATA IMAGES**

**GTx112661 WB Image**

Non-transfected (-) and transfected (+) 293T whole cell extracts (30 µg) were separated by 10% SDS-PAGE, and the membrane was blotted with Vimentin antibody (GTx112661) diluted at 1:500.

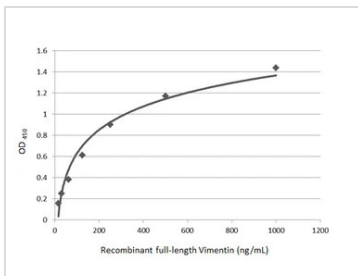

**GTx112661 IHC-P Image**

Vimentin antibody detects VIM protein at cytosol on U373 xenograft by immunohistochemical analysis.

Sample: Paraffin-embedded U373 xenograft.

Vimentin antibody (GTx112661) dilution: 1:500.

Antigen Retrieval: Trilogy™ (EDTA based, pH 8.0) buffer, 15min


**GTx112661 ELISA Image**

Sandwich ELISA detection of recombinant full-length Vimentin protein using GTx629744 as capture antibody at concentration of 5 µg/mL and GTx112661 as detection antibody at concentration of 1 µg/mL. Rabbit IgG antibody (HRP) (GTx213110-01) was diluted at 1:10000 and used to detect the primary antibody.



For full product information, images and publications, please visit our [website](https://www.genetex.com).