

MAP2 antibody [HM-2]

Cat. No. GTX11267

Host	Mouse
Clonality	Monoclonal
Isotype	IgG1
Applications	WB, ICC/IF, IHC-P, IHC-Fr, IHC
Reactivity	Human, Mouse, Rat, Bovine, Chicken, Quail

References (13)

Package

50 µl

Applications

Application Note

*Optimal dilutions/concentrations should be determined by the researcher.

Suggested dilution	Recommended dilution
WB	1-2 µg/ml
ICC/IF	Assay dependent
IHC-P	1:100-1:1000
IHC-Fr	1:100-1:1000
IHC	Assay dependent

Not tested in other applications.

Calculated MW 202 kDa. ([Note](#))**Product Note**

Monoclonal Anti-MAP2 antibody recognizes all known forms of MAP2, namely MAP2a, MAP2b and MAP2c. It does not cross-react with other MAPs or tubulin. By immunohistochemical staining of formalin-fixed, paraffin-embedded brain tissue, the antibody shows selective labeling of dendritic trees throughout the brain.

Properties

Form	Liquid
Buffer	PBS
Preservative	15mM Sodium azide
Storage	Store as concentrated solution. Centrifuge briefly prior to opening vial. For short-term storage (1-2 weeks), store at 4°C. For long-term storage, aliquot and store at -20°C or below. Avoid multiple freeze-thaw cycles.
Concentration	2 mg/ml (Please refer to the vial label for the specific concentration.)
Immunogen	rat brain microtubule-associated proteins (MAPs).
Purification	Purified immunoglobulin
Conjugation	Unconjugated



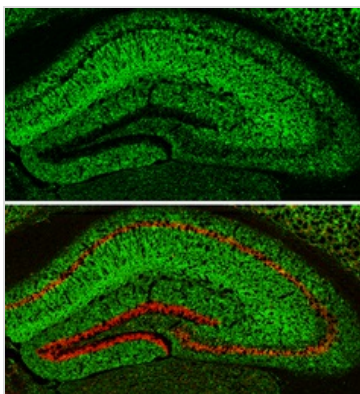
For full product information, images and publications, please visit our [website](#).

For laboratory research use only. Not for any clinical, therapeutic, or diagnostic use in humans or animals. Not for animal or human consumption.

Note

Purchasers shall not, and agree not to enable third parties to, analyze, copy, reverse engineer or otherwise attempt to determine the structure or sequence of the product.

DATA IMAGES



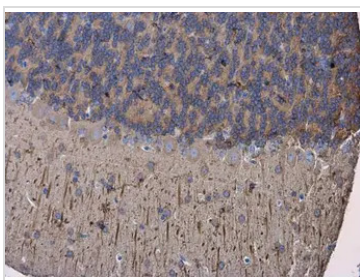
GTX11267 IHC-Fr Image

MAP2 antibody [HM-2] detects MAP2 protein expression by immunohistochemical analysis.

Sample: Frozen-sectioned adult mouse hippocampus.

Green: MAP2 protein stained by MAP2 antibody [HM-2] (GTX11267) diluted at 1:250.

Red: NeuN, stained by NeuN antibody (GTX132974) diluted at 1:500.

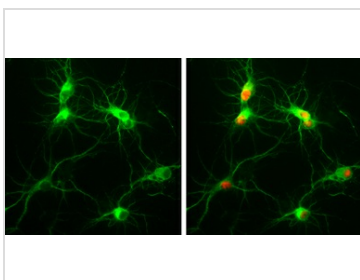


GTX11267 IHC-P Image

MAP2 antibody [HM-2] detects MAP2 protein at cytoplasm in mouse brain by immunohistochemical analysis.

Sample: Paraffin-embedded mouse brain.

MAP2 antibody [HM-2] (GTX11267) diluted at 1:500.



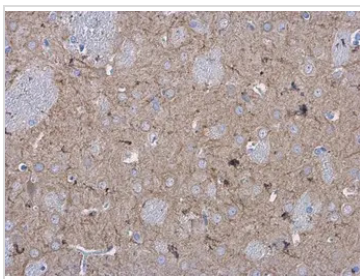
GTX11267 ICC/IF Image

MAP2 antibody [HM-2] detects MAP2 protein at by immunofluorescent analysis.

Sample: Rat E18 primary cortical neuron, DIV 8. Cells were fixed in 4% paraformaldehyde at RT for 15 min.

Green: MAP2 protein stained by MAP2 antibody [HM-2] (GTX11267) diluted at 1:250.

Red: NeuN, stained by NeuN antibody (GTX132974) diluted at 1:250.



GTX11267 IHC-P Image

MAP2 antibody [HM-2] detects MAP2 protein at cytoplasm in rat brain by immunohistochemical analysis.

Sample: Paraffin-embedded rat brain.

MAP2 antibody [HM-2] (GTX11267) diluted at 1:500.



For full product information, images and publications, please visit our [website](#).