

## MUL1 antibody

Cat. No. GTX112673

Host	Rabbit
Clonality	Polyclonal
Isotype	IgG
Applications	WB, ICC/IF, IHC-P
Reactivity	Human, Drosophila

References ( 1 )

Package

100 µl, 25 µl

## Applications

## Application Note

\*Optimal dilutions/concentrations should be determined by the researcher.

Suggested dilution	Recommended dilution
WB	1:500-1:10000
ICC/IF	1:100-1:1000
IHC-P	1:100-1:1000

Not tested in other applications.

Calculated MW 40 kDa. ( [Note](#) )

## Properties

Form	Liquid
Buffer	PBS, 20% Glycerol
Preservative	0.025% ProClin 300
Storage	Store as concentrated solution. Centrifuge briefly prior to opening vial. For short-term storage (1-2 weeks), store at 4°C. For long-term storage, aliquot and store at -20°C or below. Avoid multiple freeze-thaw cycles.
Concentration	0.97 mg/ml (Please refer to the vial label for the specific concentration.)
Immunogen	Recombinant protein encompassing a sequence within the center region of human MUL1. The exact sequence is proprietary.
Purification	Purified by antigen-affinity chromatography.
Conjugation	Unconjugated

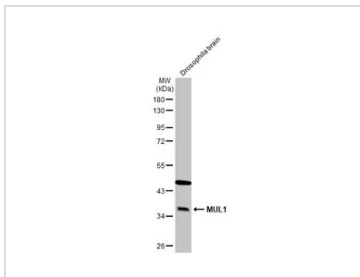
## Note

For laboratory research use only. Not for any clinical, therapeutic, or diagnostic use in humans or animals. Not for animal or human consumption.

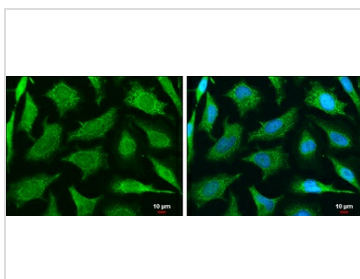
Purchasers shall not, and agree not to enable third parties to, analyze, copy, reverse engineer or otherwise attempt to determine the structure or sequence of the product.



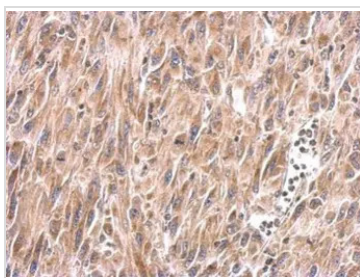
For full product information, images and publications, please visit our [website](#).

**DATA IMAGES**

**GTX112673 WB Image**

Drosophila tissue extract (50 µg) was separated by 10% SDS-PAGE, and the membrane was blotted with MUL1 antibody (GTX112673) diluted at 1:1000. The HRP-conjugated anti-rabbit IgG antibody (GTX213110-01) was used to detect the primary antibody.

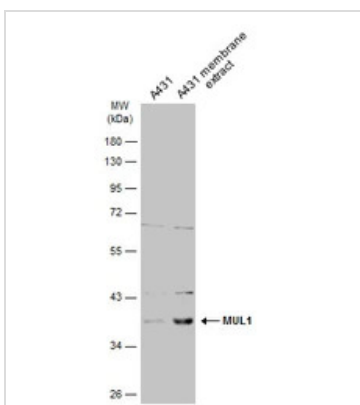

**GTX112673 ICC/IF Image**

MUL1 antibody detects MUL1 protein at mitochondria by immunofluorescent analysis.  
Sample: HeLa cells were fixed in ice-cold MeOH for 5 min.  
Green: MUL1 stained by MUL1 antibody (GTX112673) diluted at 1:500.  
Blue: Hoechst 33342 staining.  
Scale bar= 10µm.


**GTX112673 IHC-P Image**

MUL1 antibody detects MUL1 protein at cytosol on U87 xenograft by immunohistochemical analysis.  
Sample: Paraffin-embedded U87 xenograft.  
MUL1 antibody (GTX112673) dilution: 1:500.

Antigen Retrieval: Trilogy™ (EDTA based, pH 8.0) buffer, 15min


**GTX112673 WB Image**

A431 whole cell and membrane extracts (30 µg) were separated by 10% SDS-PAGE, and the membrane was blotted with MUL1 antibody (GTX112673) diluted at 1:5000. The HRP-conjugated anti-rabbit IgG antibody (GTX213110-01) was used to detect the primary antibody.



For full product information, images and publications, please visit our [website](https://www.genetex.com).