

MAP2 antibody [AP-20]

Cat. No. GTX11268

Host	Mouse
Clonality	Monoclonal
Isotype	IgG1
Applications	WB, ICC/IF, IHC-P
Reactivity	Human, Mouse, Rat, Bovine, Quail, Xenopus, aquatic salamander

References (3)

Package

50 µl

Applications

Application Note

*Optimal dilutions/concentrations should be determined by the researcher.

Suggested dilution	Recommended dilution
WB	1:500
ICC/IF	Assay dependent
IHC-P	Assay dependent

Not tested in other applications.

Properties

Form	Liquid
Buffer	Ascites
Preservative	15mM Sodium azide
Storage	Store as concentrated solution. Centrifuge briefly prior to opening vial. For short-term storage (1-2 weeks), store at 4°C. For long-term storage, aliquot and store at -20°C or below. Avoid multiple freeze-thaw cycles.
Immunogen	bovine MAP2
Purification	Unpurified
Conjugation	Unconjugated

Note

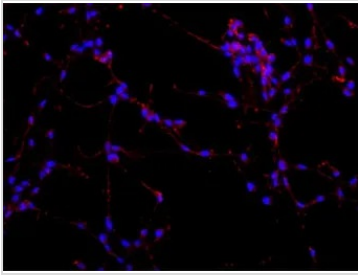
For laboratory research use only. Not for any clinical, therapeutic, or diagnostic use in humans or animals. Not for animal or human consumption.

Purchasers shall not, and agree not to enable third parties to, analyze, copy, reverse engineer or otherwise attempt to determine the structure or sequence of the product.



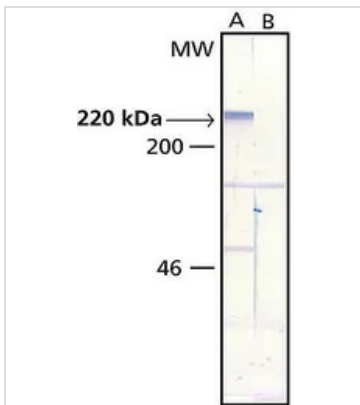
For full product information, images and publications, please visit our [website](#).

DATA IMAGES



GTX11268 ICC/IF Image

ICC/IF analysis of B35 cells using GTX11268 MAP2 antibody [AP-20] at 1:100(red) with DAPI(blue).Cells were fixed and permeabilized with methanol followed by methanol:acetone.

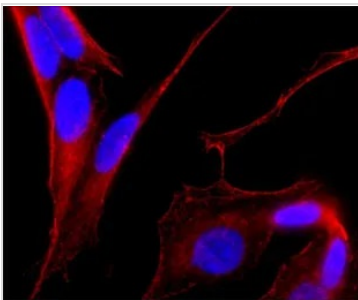


GTX11268 WB Image

WB analysis of rat brain extract using GTX11268 MAP2 antibody[AP-20].

Lane A : Antibody dilution 1:500

Lane B : Secondary antibody only



GTX11268 ICC/IF Image

ICC/IF analysis of SH-SY-5Y cells using GTX11268 MAP2 antibody [AP-20] at 1:500(red) with DAPI(blue).Cells were fixed and permeabilized with methanol followed by methanol:acetone.



For full product information, images and publications, please visit our [website](https://www.genetex.com).