

CD105 antibody [N1N3-2]

Cat. No. GTX112685

Host	Rabbit
Clonality	Polyclonal
Isotype	IgG
Applications	WB, IHC-P
Reactivity	Human, Mouse

Package
100 µl, 25 µl

Applications

Application Note

*Optimal dilutions/concentrations should be determined by the researcher.

Suggested dilution	Recommended dilution
WB	1:500-1:3000
IHC-P	Assay dependent

Not tested in other applications.

Calculated MW 71 kDa. ([Note](#))

Properties

Form	Liquid
Buffer	PBS, 1% BSA, 20% Glycerol
Preservative	0.01% Thimerosal
Storage	Store as concentrated solution. Centrifuge briefly prior to opening vial. For short-term storage (1-2 weeks), store at 4°C. For long-term storage, aliquot and store at -20°C or below. Avoid multiple freeze-thaw cycles.
Concentration	1 mg/ml (Please refer to the vial label for the specific concentration.)
Immunogen	Recombinant protein encompassing a sequence within the Extracellular domain of human CD105. The exact sequence is proprietary.
Purification	Purified by antigen-affinity chromatography.
Conjugation	Unconjugated

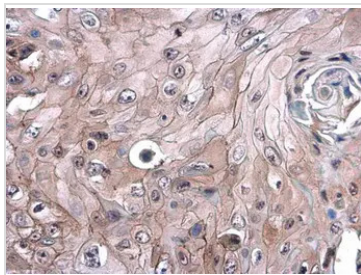
Note

For laboratory research use only. Not for any clinical, therapeutic, or diagnostic use in humans or animals. Not for animal or human consumption.

Purchasers shall not, and agree not to enable third parties to, analyze, copy, reverse engineer or otherwise attempt to determine the structure or sequence of the product.



For full product information, images and publications, please visit our [website](#).

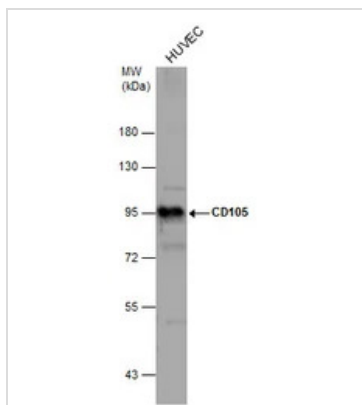
DATA IMAGES

GTx112685 IHC-P Image

CD105 antibody [N1N3-2] detects CD105 protein at cell membrane and cytoplasm by immunohistochemical analysis.

Sample: Paraffin-embedded human esophageal carcinoma.

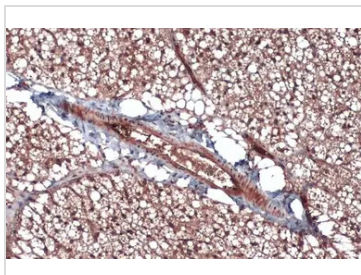
CD105 stained by CD105 antibody [N1N3-2] (GTx112685) diluted at 1:500.

Antigen Retrieval: Citrate buffer, pH 6.0, 15 min


GTx112685 WB Image

Whole cell extract (30 µg) was separated by 7.5% SDS-PAGE, and the membrane was blotted with CD105 antibody [N1N3-2] (GTx112685) diluted at 1:1000.

The observed M.W. is based on the publication: [PMID: 10625079](https://pubmed.ncbi.nlm.nih.gov/10625079/)

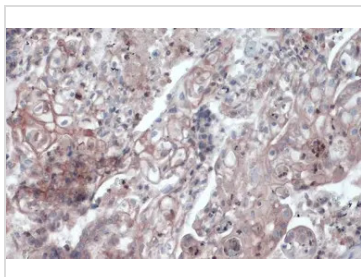

GTx112685 IHC-P Image

CD105 antibody [N1N3-2] detects CD105 protein at cell membrane and cytoplasm by immunohistochemical analysis.

Sample: Paraffin-embedded mouse brown adipocyte.

CD105 stained by CD105 antibody [N1N3-2] (GTx112685) diluted at 1:500.

Antigen Retrieval: Citrate buffer, pH 6.0, 15 min


GTx112685 IHC-P Image

CD105 antibody [N1N3-2] detects CD105 protein at cell membrane by immunohistochemical analysis.

Sample: Paraffin-embedded human ovarian cancer.

CD105 stained by CD105 antibody [N1N3-2] (GTx112685) diluted at 1:1000.

Antigen Retrieval: Citrate buffer, pH 6.0, 15 min



For full product information, images and publications, please visit our [website](https://www.genetex.com).