

## Tubulin antibody

**Cat. No. GTX11270**

<b>Host</b>	Rabbit
<b>Clonality</b>	Polyclonal
<b>Isotype</b>	IgG
<b>Applications</b>	WB, ICC/IF
<b>Reactivity</b>	Mouse, Chicken

References ( 1 )  
 Package  
 200 µl

## Applications

**Application Note**

\*Optimal dilutions/concentrations should be determined by the researcher.

Suggested dilution	Recommended dilution
WB	1:200
ICC/IF	1:80

Not tested in other applications.

**Product Note**

The product stains tubulin in cultured chicken fibroblasts or 3T3 mouse fibroblasts. Additional bands may be stained in immunoblotting.

## Properties

<b>Form</b>	Liquid
<b>Buffer</b>	Serum
<b>Preservative</b>	15mM Sodium azide
<b>Storage</b>	Store as concentrated solution. Centrifuge briefly prior to opening vial. For short-term storage (1-2 weeks), store at 4°C. For long-term storage, aliquot and store at -20°C or below. Avoid multiple freeze-thaw cycles.
<b>Immunogen</b>	microtubule proteins from brains of 13 day old chicken embryos
<b>Purification</b>	Unpurified
<b>Conjugation</b>	Unconjugated

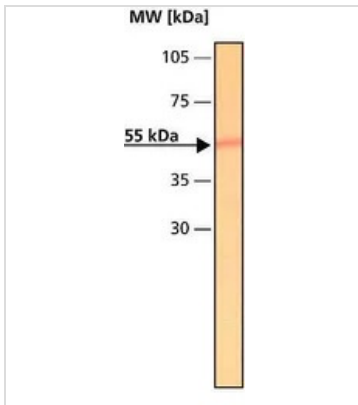
**Note**

For laboratory research use only. Not for any clinical, therapeutic, or diagnostic use in humans or animals. Not for animal or human consumption.

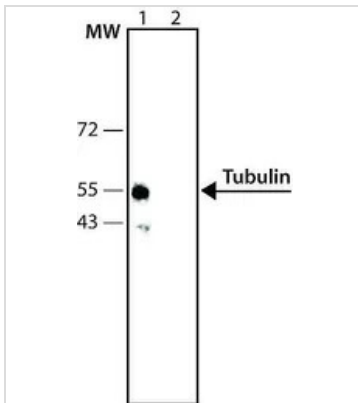
Purchasers shall not, and agree not to enable third parties to, analyze, copy, reverse engineer or otherwise attempt to determine the structure or sequence of the product.



For full product information, images and publications, please visit our [website](#).

**DATA IMAGES**

**GTX11270 WB Image**

WB analysis of chicken gizzard extract using GTX11270 Tubulin antibody at 1:50.


**GTX11270 WB Image**

WB analysis of mouse brain extract using GTX11270 Tubulin antibody.

Lane 1 : Antibody dilution 1:500

Lane 2 : Negative control (without primary antibody)



For full product information, images and publications, please visit our [website](#).