

## TMED4 antibody [N1C3]

Cat. No. GTX112712

Host	Rabbit
Clonality	Polyclonal
Isotype	IgG
Applications	WB, ICC/IF, IHC-P, IHC-Wm
Reactivity	Human, Zebrafish

 Review ( 1 )Package  
100 µl, 25 µl

## Applications

## Application Note

\*Optimal dilutions/concentrations should be determined by the researcher.

Suggested dilution	Recommended dilution
WB	1:500-1:3000
ICC/IF	1:100-1:1000
IHC-P	1:100-1:1000
IHC-Wm	Assay dependent

Not tested in other applications.

Calculated MW 26 kDa. ( [Note](#) )

## Properties

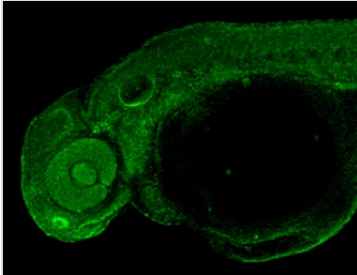
Form	Liquid
Buffer	0.1M Tris, 0.1M Glycine, 20% Glycerol
Preservative	0.01% Thimerosal
Storage	Store as concentrated solution. Centrifuge briefly prior to opening vial. For short-term storage (1-2 weeks), store at 4°C. For long-term storage, aliquot and store at -20°C or below. Avoid multiple freeze-thaw cycles.
Concentration	0.27 mg/ml (Please refer to the vial label for the specific concentration.)
Immunogen	Recombinant protein encompassing a sequence within the center region of human TMED4. The exact sequence is proprietary.
Purification	Purified by antigen-affinity chromatography.
Conjugation	Unconjugated

For full product information, images and publications, please visit our [website](#).

For laboratory research use only. Not for any clinical, therapeutic, or diagnostic use in humans or animals. Not for animal or human consumption.

**Note**

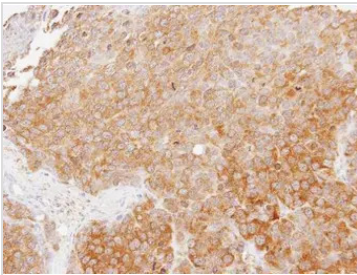
Purchasers shall not, and agree not to enable third parties to, analyze, copy, reverse engineer or otherwise attempt to determine the structure or sequence of the product.

**DATA IMAGES**

**GTX112712 IHC-Wm Image**

TMED4 antibody [N1C3] detects Tmed4 protein on zebrafish by whole mount immunohistochemical analysis.

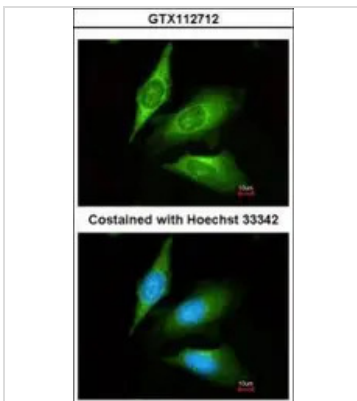
Sample: 2 days-post-fertilization zebrafish embryo.

TMED4 antibody [N1C3] (GTX112712) dilution: 1:50.

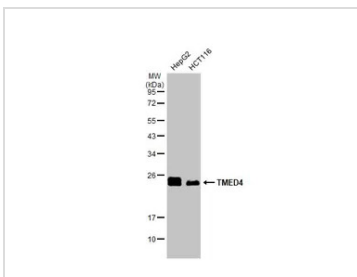

**GTX112712 IHC-P Image**

Immunohistochemical analysis of paraffin-embedded human lung SCC, using TMED4(GTX112712) antibody at 1:100 dilution.

Antigen Retrieval: Trilogy™ (EDTA based, pH 8.0) buffer, 15min


**GTX112712 ICC/IF Image**

Immunofluorescence analysis of methanol-fixed HeLa, using TMED4(GTX112712) antibody at 1:200 dilution.


**GTX112712 WB Image**

Various whole cell extracts (30 µg) were separated by 12% SDS-PAGE, and the membrane was blotted with TMED4 antibody [N1C3] (GTX112712) diluted at 1:1000. The HRP-conjugated anti-rabbit IgG antibody (GTX213110-01) was used to detect the primary antibody.



For full product information, images and publications, please visit our [website](https://www.genetex.com).