

# COL1A1 antibody [N1N2], N-term

**Cat. No. GTX112731**

<b>Host</b>	Rabbit
<b>Clonality</b>	Polyclonal
<b>Isotype</b>	IgG
<b>Applications</b>	WB, ICC/IF, IHC-P, IHC-Fr, IP
<b>Reactivity</b>	Polyodon spathula, Human, Mouse, Rat

References ( 25 )

★★★★★ Review ( 2 )

Package

100 µl, 25 µl

## Applications

### Application Note

\*Optimal dilutions/concentrations should be determined by the researcher.

Suggested dilution	Recommended dilution
WB	1:500-1:3000
ICC/IF	1:100-1:1000
IHC-P	1:100-1:1000
IHC-Fr	Assay dependent
IP	1:100-1:500

Not tested in other applications.

**Calculated MW** 139 kDa. ( [Note](#) )

## Properties

<b>Form</b>	Liquid
<b>Buffer</b>	PBS, 1% BSA, 20% Glycerol
<b>Preservative</b>	0.025% ProClin 300
<b>Storage</b>	Store as concentrated solution. Centrifuge briefly prior to opening vial. For short-term storage (1-2 weeks), store at 4°C. For long-term storage, aliquot and store at -20°C or below. Avoid multiple freeze-thaw cycles.
<b>Concentration</b>	0.09 mg/ml (Please refer to the vial label for the specific concentration.)
<b>Immunogen</b>	Recombinant protein encompassing a sequence within the N-terminus region of human COL1A1. The exact sequence is proprietary.
<b>Purification</b>	Purified by antigen-affinity chromatography.
<b>Conjugation</b>	Unconjugated



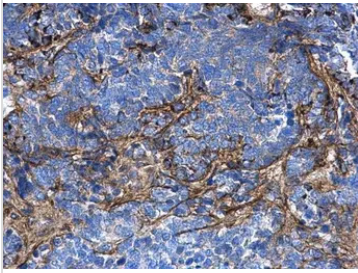
For full product information, images and publications, please visit our [website](#).

For laboratory research use only. Not for any clinical, therapeutic, or diagnostic use in humans or animals. Not for animal or human consumption.

## Note

Purchasers shall not, and agree not to enable third parties to, analyze, copy, reverse engineer or otherwise attempt to determine the structure or sequence of the product.

## DATA IMAGES



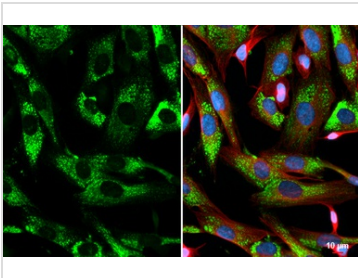
### GTX112731 IHC-P Image

COL1A1 antibody [N1N2], N-term detects COL1A1 protein at secreted on human endometrial carcinoma by immunohistochemical analysis.

Sample: Paraffin-embedded human endometrial carcinoma.

COL1A1 antibody [N1N2], N-term (GTX112731) diluted at 1:500.

Antigen Retrieval: Trility™ (EDTA based, pH 8.0) buffer, 15min



### GTX112731 ICC/IF Image

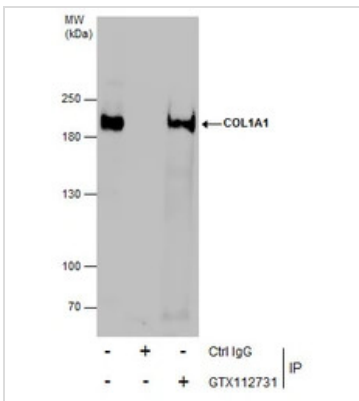
COL1A1 antibody [N1N2], N-term detects COL1A1 protein at vesicle by immunofluorescent analysis.

Sample: SK-N-SH cells were fixed in 4% paraformaldehyde at RT for 15 min.

Green: COL1A1 stained by COL1A1 antibody [N1N2], N-term (GTX112731) diluted at 1:500.

Red: alpha Tubulin, a cytoskeleton marker, stained by alpha Tubulin antibody [GT114] (GTX628802) diluted at 1:1000.

Blue: Fluoroshield with DAPI (GTX30920).

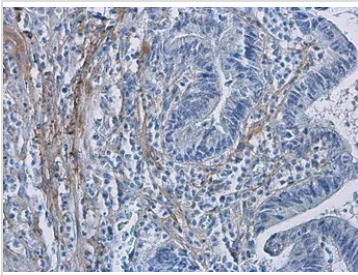


### GTX112731 IP Image

Immunoprecipitation of COL1A1 protein from SK-N-AS whole cell extracts using 5 µg of COL1A1 antibody [N1N2], N-term (GTX112731).

Western blot analysis was performed using COL1A1 antibody [N1N2], N-term (GTX112731) diluted at 1:500.

EasyBlot anti-Rabbit IgG (GTX221666-01) was used as a secondary reagent.



### GTX112731 IHC-P Image

COL1A1 antibody [N1N2], N-term detects secreted COL1A1 protein in human colon cancer by immunohistochemical analysis.

Sample: Paraffin-embedded human colon cancer.

COL1A1 antibody [N1N2], N-term (GTX112731) diluted at 1:500.

Antigen Retrieval: Citrate buffer, pH 6.0, 15 min



For full product information, images and publications, please visit our [website](https://www.genetex.com).