

# Adiponectin antibody

**Cat. No. GTX112777**

<b>Host</b>	Rabbit
<b>Clonality</b>	Polyclonal
<b>Isotype</b>	IgG
<b>Applications</b>	WB, IHC-P
<b>Reactivity</b>	Human, Mouse, Rat, Plant

References ( 20 )

★★★★☆ Review ( 4 )

Package

100 µl, 25 µl

## Applications

### Application Note

\*Optimal dilutions/concentrations should be determined by the researcher.

Suggested dilution	Recommended dilution
WB	1:500-1:3000
IHC-P	Assay dependent

Not tested in other applications.

**Calculated MW** 26 kDa. ( [Note](#) )

## Properties

<b>Form</b>	Liquid
<b>Buffer</b>	PBS, 20% Glycerol
<b>Preservative</b>	0.01% Thimerosal
<b>Storage</b>	Store as concentrated solution. Centrifuge briefly prior to opening vial. For short-term storage (1-2 weeks), store at 4°C. For long-term storage, aliquot and store at -20°C or below. Avoid multiple freeze-thaw cycles.
<b>Concentration</b>	1 mg/ml (Please refer to the vial label for the specific concentration.)
<b>Immunogen</b>	Full length human Adiponectin Recombinant protein.
<b>Purification</b>	Purified by antigen-affinity chromatography.
<b>Conjugation</b>	Unconjugated

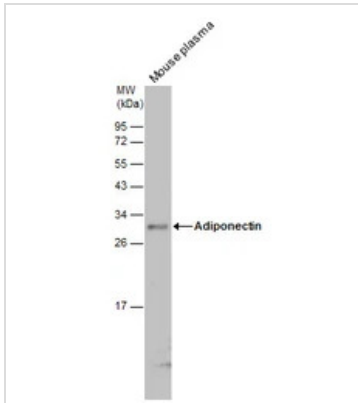
### Note

For laboratory research use only. Not for any clinical, therapeutic, or diagnostic use in humans or animals. Not for animal or human consumption.

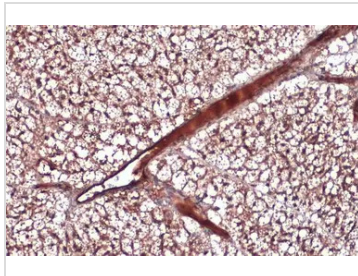
Purchasers shall not, and agree not to enable third parties to, analyze, copy, reverse engineer or otherwise attempt to determine the structure or sequence of the product.



For full product information, images and publications, please visit our [website](#).

**DATA IMAGES**

**GTX112777 WB Image**

Mouse tissue extract (50  $\mu$ g) was separated by 12% SDS-PAGE, and the membrane was blotted with Adiponectin antibody (GTX112777) diluted at 1:500.

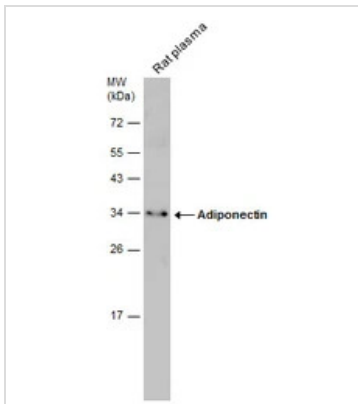

**GTX112777 IHC-P Image**

Adiponectin antibody detects Adiponectin protein at cytoplasm and secreted by immunohistochemical analysis.

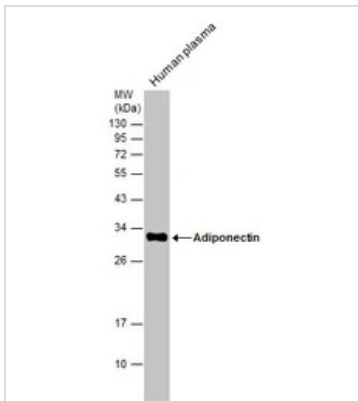
Sample: Paraffin-embedded mouse brown adipocyte.

Adiponectin stained by Adiponectin antibody (GTX112777) diluted at 1:500.

Antigen Retrieval: Citrate buffer, pH 6.0, 15 min


**GTX112777 WB Image**

Rat tissue extract (50  $\mu$ g) was separated by 12% SDS-PAGE, and the membrane was blotted with Adiponectin antibody (GTX112777) diluted at 1:500.


**GTX112777 WB Image**

Adiponectin antibody detects Adiponectin protein by western blot analysis. Human tissue extracts (30  $\mu$ g) was separated by 12% SDS-PAGE, and the membrane was blotted with Adiponectin antibody (GTX112777) diluted at 1:500.



For full product information, images and publications, please visit our [website](https://www.genetex.com).