

## UCP1 antibody

**Cat. No. GTX112784**

<b>Host</b>	Rabbit
<b>Clonality</b>	Polyclonal
<b>Isotype</b>	IgG
<b>Applications</b>	WB, IHC-P
<b>Reactivity</b>	Human, Mouse

References ( 17 )

★★★★★ Review ( 1 )

Package

100 µl, 25 µl

## Applications

**Application Note**

\*Optimal dilutions/concentrations should be determined by the researcher.

Suggested dilution	Recommended dilution
WB	1:500-1:3000
IHC-P	1:100-1:1000

Not tested in other applications.

**Calculated MW** 33 kDa. ( [Note](#) )

## Properties

<b>Form</b>	Liquid
<b>Buffer</b>	PBS, 1% BSA, 20% Glycerol
<b>Preservative</b>	0.025% ProClin 300
<b>Storage</b>	Store as concentrated solution. Centrifuge briefly prior to opening vial. For short-term storage (1-2 weeks), store at 4°C. For long-term storage, aliquot and store at -20°C or below. Avoid multiple freeze-thaw cycles.
<b>Concentration</b>	0.34 mg/ml (Please refer to the vial label for the specific concentration.)
<b>Immunogen</b>	Recombinant protein encompassing a sequence within the center region of human UCP1. The exact sequence is proprietary.
<b>Purification</b>	Purified by antigen-affinity chromatography.
<b>Conjugation</b>	Unconjugated

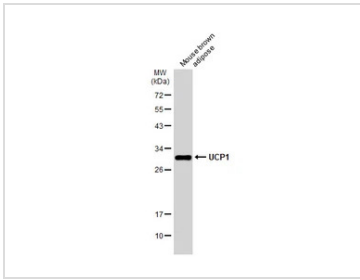
**Note**

For laboratory research use only. Not for any clinical, therapeutic, or diagnostic use in humans or animals. Not for animal or human consumption.

Purchasers shall not, and agree not to enable third parties to, analyze, copy, reverse engineer or otherwise attempt to determine the structure or sequence of the product.

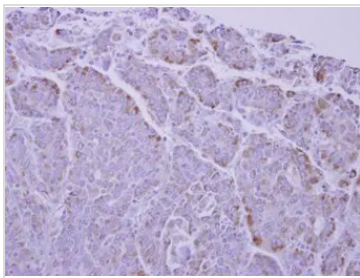
For full product information, images and publications, please visit our [website](#).

DATA IMAGES



**GTX112784 WB Image**

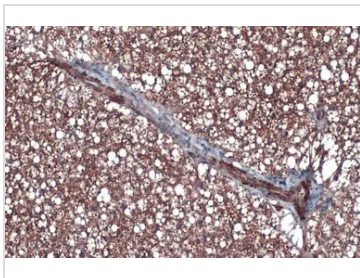
Mouse tissue extract (50 µg) was separated by 12% SDS-PAGE, and the membrane was blotted with UCP1 antibody (GTX112784) diluted at 1:1000. The HRP-conjugated anti-rabbit IgG antibody (GTX213110-01) was used to detect the primary antibody.



**GTX112784 IHC-P Image**

Immunohistochemical analysis of paraffin-embedded human colon carcinoma, using UCP1(GTX112784) antibody at 1:250 dilution.

Antigen Retrieval: Trilogy™ (EDTA based, pH 8.0) buffer, 15min



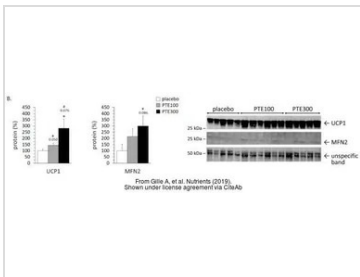
**GTX112784 IHC-P Image**

UCP1 antibody detects UCP1 protein at cytoplasm by immunohistochemical analysis.

Sample: Paraffin-embedded mouse brown adipocyte.

UCP1 stained by UCP1 antibody (GTX112784) diluted at 1:500.

Antigen Retrieval: Citrate buffer, pH 6.0, 15 min



**GTX112784 WB Image**

The data was published in the journal Nutrients in 2019. [PMID: 30959933](https://pubmed.ncbi.nlm.nih.gov/30959933/)



**GTX112784 IHC-P Image**

The data was published in the journal Nutrients in 2019. [PMID: 30959933](https://pubmed.ncbi.nlm.nih.gov/30959933/)



For full product information, images and publications, please visit our [website](https://www.genetex.com).