

## Fibronectin antibody [N1N2], N-term

Cat. No. GTX112794

<b>Host</b>	Rabbit
<b>Clonality</b>	Polyclonal
<b>Isotype</b>	IgG
<b>Applications</b>	WB, ICC/IF, IHC-P, IHC-Fr, IP, ELISA
<b>Reactivity</b>	Human, Mouse, Rat

References ( 65 )

Package

100 µl, 25 µl

## PRODUCT

## Summary

Fibronectin antibody recognizes fibronectin protein, which is an extracellular glycoprotein (predicted molecular weight of 272 kDa) that exists in two forms. Insoluble fibronectin, made by fibroblasts, chondrocytes, endothelial cells, macrophages, and certain epithelial cells, binds to multiple matrix proteins such as collagens, syndecans, and integrins to mediate cell adhesion and migration. Soluble fibronectin, produced by hepatocytes as a component of vertebrate blood plasma, is involved in blood clotting and wound repair.

## Applications

## Application Note

\*Optimal dilutions/concentrations should be determined by the researcher.

Suggested dilution	Recommended dilution
WB	1:500-1:3000
ICC/IF	1:100-1:1000
IHC-P	1:100-1:1000
IHC-Fr	Assay dependent
IP	1:100-1:500
ELISA	1:1000-1:10000

Not tested in other applications.

**Calculated MW** 263 kDa. ( [Note](#) )

## Properties

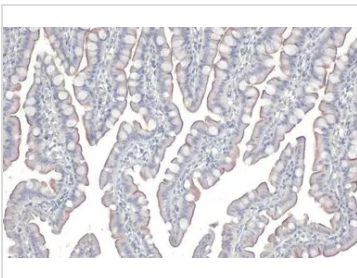
<b>Form</b>	Liquid
<b>Buffer</b>	PBS, 1% BSA, 20% Glycerol
<b>Preservative</b>	0.025% ProClin 300
<b>Storage</b>	Store as concentrated solution. Centrifuge briefly prior to opening vial. For short-term storage (1-2 weeks), store at 4°C. For long-term storage, aliquot and store at -20°C or below. Avoid multiple freeze-thaw cycles.
<b>Concentration</b>	0.48 mg/ml (Please refer to the vial label for the specific concentration.)



For full product information, images and publications, please visit our [website](#).

<b>Immunogen</b>	Recombinant protein encompassing a sequence within the N-terminus region of human Fibronectin. The exact sequence is proprietary.
<b>Purification</b>	Purified by antigen-affinity chromatography.
<b>Conjugation</b>	Unconjugated
<b>Note</b>	For laboratory research use only. Not for any clinical, therapeutic, or diagnostic use in humans or animals. Not for animal or human consumption.  Purchasers shall not, and agree not to enable third parties to, analyze, copy, reverse engineer or otherwise attempt to determine the structure or sequence of the product.

## DATA IMAGES



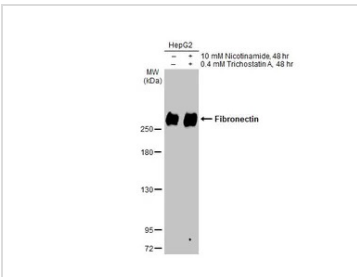
### GTx112794 IHC-P Image

Fibronectin antibody [N1N2], N-term detects Fibronectin protein at cell membrane by immunohistochemical analysis.

Sample: Paraffin-embedded rat colon.

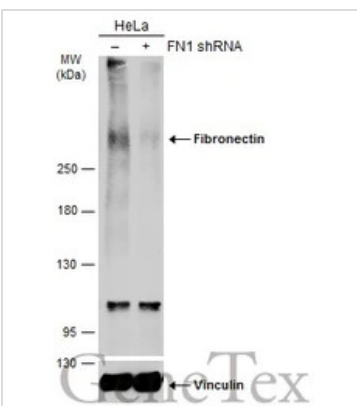
Fibronectin stained by Fibronectin antibody [N1N2], N-term (GTx112794) diluted at 1:500.

Antigen Retrieval: Citrate buffer, pH 6.0, 15 min



### GTx112794 WB Image

Untreated (-) and treated (+) HepG2 whole cell extracts (30 µg) were separated by 5% SDS-PAGE, and the membrane was blotted with Fibronectin antibody [N1N2], N-term (GTx112794) diluted at 1:1000. The HRP-conjugated anti-rabbit IgG antibody (GTx213110-01) was used to detect the primary antibody.



### GTx112794 WB Image

Non-transfected (-) and transfected (+) HeLa whole cell extracts (30 µg) were separated by 5% SDS-PAGE, and the membrane was blotted with Fibronectin antibody [N1N2], N-term (GTx112794) diluted at 1:2000. The HRP-conjugated anti-rabbit IgG antibody (GTx213110-01) was used to detect the primary antibody, and the signal was developed with Trident ECL plus-Enhanced.



For full product information, images and publications, please visit our [website](https://www.genetex.com).