

alpha Synuclein antibody

Cat. No. GTX112799

| | |
|---------------------|---------------------------|
| Host | Rabbit |
| Clonality | Polyclonal |
| Isotype | IgG |
| Applications | WB, ICC/IF, IHC-P, IHC-Fr |
| Reactivity | Human, Mouse, Rat |

References (17)

Package

100 µl, 25 µl

Applications

Application Note

*Optimal dilutions/concentrations should be determined by the researcher.

| Suggested dilution | Recommended dilution |
|--------------------|----------------------|
| WB | 1:500-1:3000 |
| ICC/IF | 1:100-1:1000 |
| IHC-P | 1:100-1:1000 |
| IHC-Fr | 1:100-1:1000 |

Not tested in other applications.

Calculated MW 14 kDa. ([Note](#))

Properties

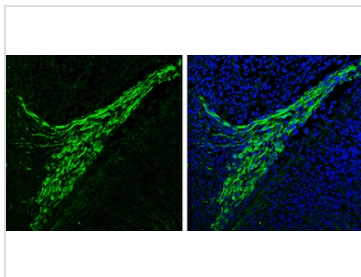
| | |
|----------------------|--|
| Form | Liquid |
| Buffer | PBS, 1% BSA, 20% Glycerol |
| Preservative | 0.025% ProClin 300 |
| Storage | Store as concentrated solution. Centrifuge briefly prior to opening vial. For short-term storage (1-2 weeks), store at 4°C. For long-term storage, aliquot and store at -20°C or below. Avoid multiple freeze-thaw cycles. |
| Concentration | 0.31 mg/ml (Please refer to the vial label for the specific concentration.) |
| Immunogen | Full length human alpha Synuclein Recombinant protein. |
| Purification | Purified by antigen-affinity chromatography. |
| Conjugation | Unconjugated |

Note

For laboratory research use only. Not for any clinical, therapeutic, or diagnostic use in humans or animals. Not for animal or human consumption.

Purchasers shall not, and agree not to enable third parties to, analyze, copy, reverse engineer or otherwise attempt to determine the structure or sequence of the product.

For full product information, images and publications, please visit our [website](#).

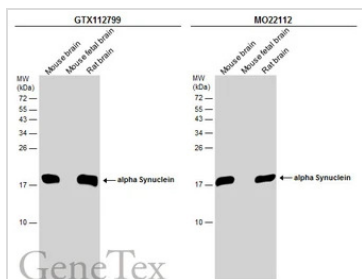
DATA IMAGES

GTX112799 IHC-Fr Image

alpha Synuclein antibody detects alpha Synuclein protein expression by immunohistochemical analysis.

Sample: Frozen sectioned E13.5 Rat brain.

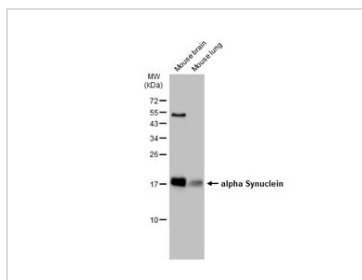
Green: alpha Synuclein protein stained by alpha Synuclein antibody (GTX112799) diluted at 1:250.

Blue: Fluoroshield with DAPI (GTX30920).

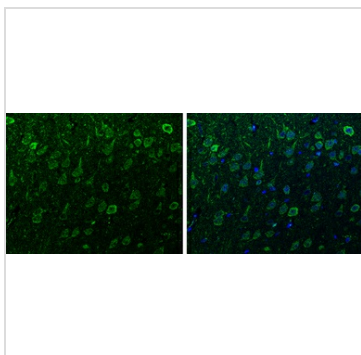

GTX112799 WB Image

Various tissue extracts (50 µg) were separated by 15% SDS-PAGE, and the membranes were blotted with alpha Synuclein antibody (GTX112799) diluted at 1:2000 and competitor's antibody (MO22112) diluted at 1:2000. The HRP-conjugated anti-rabbit IgG antibody (GTX213110-01) was used to detect the primary antibody.

*The competitor is not affiliated with GeneTex and does not endorse this product.


GTX112799 WB Image

Various tissue extracts (50 µg) were separated by 15% SDS-PAGE, and the membrane was blotted with alpha Synuclein antibody (GTX112799) diluted at 1:1000. The HRP-conjugated anti-rabbit IgG antibody (GTX213110-01) was used to detect the primary antibody.


GTX112799 IHC-P Image

alpha Synuclein antibody detects alpha Synuclein protein at cytoplasm and nucleus in rat brain by immunohistochemical analysis.

Sample: Paraffin-embedded rat brain.

Green: alpha Synuclein antibody (GTX112799) diluted at 1:200. The signal was developed using goat anti-rabbit IgG antibody (Dylight488) (GTX213110-04).

Blue: Nuclear staining with Hoechst 33342.

Antigen Retrieval: Citrate buffer, pH 6.0, 15 min



For full product information, images and publications, please visit our [website](https://www.genetex.com).