

beta 2 Microglobulin antibody

Cat. No. GTX112815

Host	Rabbit
Clonality	Polyclonal
Isotype	IgG
Applications	WB, ICC/IF, IHC-P, IP
Reactivity	Human, Mouse, Rat, Marmoset

References (3)

★★★★☆ Review (2)

Package

100 µl, 25 µl

Applications

Application Note

*Optimal dilutions/concentrations should be determined by the researcher.

Suggested dilution	Recommended dilution
WB	1:500-1:3000
ICC/IF	Assay dependent
IHC-P	1:100-1:1000
IP	1:100-1:500

Not tested in other applications.

Calculated MW 14 kDa. ([Note](#))

Properties

Form	Liquid
Buffer	PBS, 1% BSA, 20% Glycerol
Preservative	0.025% ProClin 300
Storage	Store as concentrated solution. Centrifuge briefly prior to opening vial. For short-term storage (1-2 weeks), store at 4°C. For long-term storage, aliquot and store at -20°C or below. Avoid multiple freeze-thaw cycles.
Concentration	0.37 mg/ml (Please refer to the vial label for the specific concentration.)
Immunogen	Full length human beta 2 Microglobulin Recombinant protein.
Purification	Purified by antigen-affinity chromatography.
Conjugation	Unconjugated

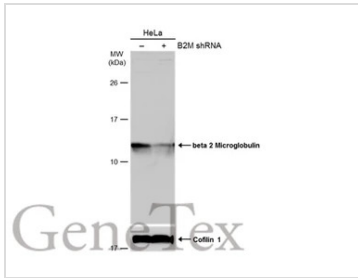
Note

For laboratory research use only. Not for any clinical, therapeutic, or diagnostic use in humans or animals. Not for animal or human consumption.

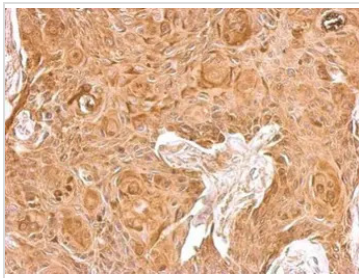
Purchasers shall not, and agree not to enable third parties to, analyze, copy, reverse engineer or otherwise attempt to determine the structure or sequence of the product.

For full product information, images and publications, please visit our [website](#).

DATA IMAGES

**GTX112815 WB Image**

Non-transfected (-) and transfected (+) HeLa whole cell extracts (50 µg) were separated by 15% SDS-PAGE, and the membrane was blotted with beta 2 Microglobulin antibody (GTX112815) diluted at 1:500. The HRP-conjugated anti-rabbit IgG antibody (GTX213110-01) was used to detect the primary antibody.

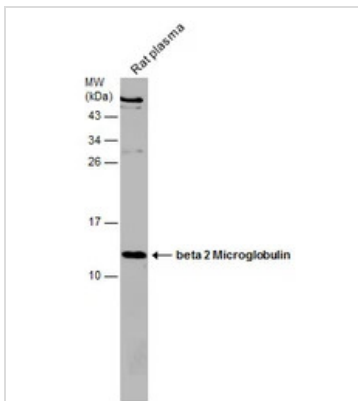
**GTX112815 IHC-P Image**

beta 2 Microglobulin antibody detects B2M protein at cytosol on Cal27 xenograft by immunohistochemical analysis.

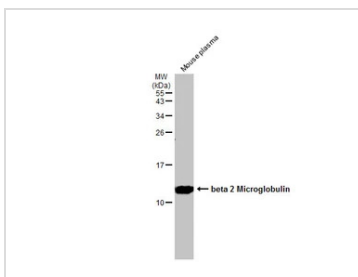
Sample: Paraffin-embedded Cal27 xenograft.

beta 2 Microglobulin antibody (GTX112815) dilution: 1:500.

Antigen Retrieval: Trilogy™ (EDTA based, pH 8.0) buffer, 15min

**GTX112815 WB Image**

Rat tissue extract (50 µg) was separated by 15% SDS-PAGE, and the membrane was blotted with beta 2 Microglobulin antibody (GTX112815) diluted at 1:500.

**GTX112815 WB Image**

Mouse plasma (50 µg) was separated by 15% SDS-PAGE, and the membrane was blotted with beta 2 Microglobulin antibody (GTX112815) diluted at 1:1500. The HRP-conjugated anti-rabbit IgG antibody (GTX213110-01) was used to detect the primary antibody.



For full product information, images and publications, please visit our [website](#).