

## Cytokeratin 19 antibody [N1C1]

Cat. No. GTX112826

Host	Rabbit
Clonality	Polyclonal
Isotype	IgG
Application	WB, ICC/IF, IHC-P
Reactivity	Human, Mouse, Dog

Reference ( 2 )

Package

100 µl, 25 µl

## APPLICATION

## Application Note

\*Optimal dilutions/concentrations should be determined by the researcher.

Suggested dilution	Recommended dilution
WB	1:500-1:3000
ICC/IF	1:100-1:1000
IHC-P	1:100-1:1000

Not tested in other applications.

Calculated MW 44 kDa. ( [Note](#) )

## PROPERTIES

Form	Liquid
Buffer	0.1M Tris, 0.1M Glycine, 10% Glycerol
Preservative	0.01% Thimerosal
Storage	Store as concentrated solution. Centrifuge briefly prior to opening vial. For short-term storage (1-2 weeks), store at 4°C. For long-term storage, aliquot and store at -20°C or below. Avoid multiple freeze-thaw cycles.
Concentration	1 mg/ml (Please refer to the vial label for the specific concentration.)
Immunogen	Recombinant protein encompassing a sequence within the center region of human Cytokeratin 19. The exact sequence is proprietary.
Purification	Purified by antigen-affinity chromatography.
Conjugation	Unconjugated

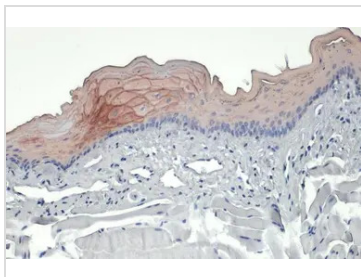
## Note

For laboratory research use only. Not for any clinical, therapeutic, or diagnostic use in humans or animals. Not for animal or human consumption.

Purchasers shall not, and agree not to enable third parties to, analyze, copy, reverse engineer or otherwise attempt to determine the structure or sequence of the product.



For full product information, images and publications, please visit our [website](#).

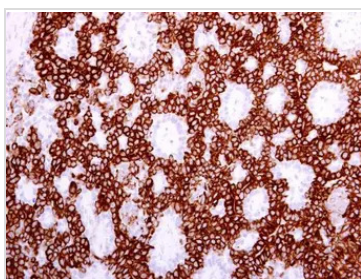
**DATA IMAGES**

**GTx112826 IHC-P Image**

Cytokeratin 19 antibody [N1C1] detects Cytokeratin 19 protein at cell membrane by immunohistochemical analysis.

Sample: Paraffin-embedded mouse tongue.

Cytokeratin 19 stained by Cytokeratin 19 antibody [N1C1] (GTx112826) diluted at 1:500.

Antigen Retrieval: Citrate buffer, pH 6.0, 15 min

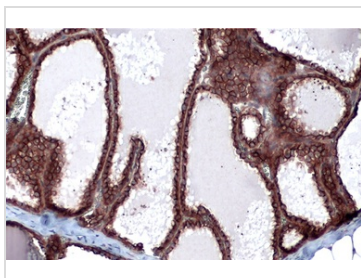

**GTx112826 IHC-P Image**

Cytokeratin 19 antibody [N1C1] detects Cytokeratin 19 protein at cytoplasm in human lung adenocarcinoma by immunohistochemical analysis.

Sample: Paraffin-embedded human lung adenocarcinoma.

Cytokeratin 19 antibody [N1C1] (GTx112826) diluted at 1:500.

Antigen Retrieval: Citrate buffer, pH 6.0, 15 min

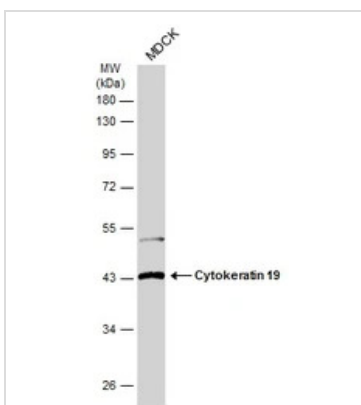

**GTx112826 IHC-P Image**

Cytokeratin 19 antibody detects Cytokeratin 19 protein at cell membrane and cytoplasm by immunohistochemical analysis.

Sample: Paraffin-embedded dog mammary gland.

Cytokeratin 19 stained by Cytokeratin 19 antibody (GTx112826) diluted at 1:500.

Antigen Retrieval: Citrate buffer, pH 6.0, 15 min


**GTx112826 WB Image**

Whole cell extract (30 µg) was separated by 10% SDS-PAGE, and the membrane was blotted with Cytokeratin 19 antibody (GTx112826) diluted at 1:1000. The HRP-conjugated anti-rabbit IgG antibody (GTx213110-01) was used to detect the primary antibody.



For full product information, images and publications, please visit our [website](https://www.genetex.com).