

EPO antibody

Cat. No. GTX112834

Host	Rabbit
Clonality	Polyclonal
Isotype	IgG
Application	WB, IHC-P, ELISA
Reactivity	Human, Mouse, Rat

Reference (1)

Package

100 µl, 25 µl

APPLICATION

Application Note

*Optimal dilutions/concentrations should be determined by the researcher.

Suggested dilution	Recommended dilution
WB	1:5000-1:20000
IHC-P	1:100-1:1000
ELISA	1:1000-1:10000

Not tested in other applications.

Calculated MW 21 kDa. ([Note](#))

PROPERTIES

Form	Liquid
Buffer	PBS, 20% Glycerol
Preservative	0.01% Thimerosal
Storage	Store as concentrated solution. Centrifuge briefly prior to opening vial. For short-term storage (1-2 weeks), store at 4°C. For long-term storage, aliquot and store at -20°C or below. Avoid multiple freeze-thaw cycles.
Concentration	1 mg/ml (Please refer to the vial label for the specific concentration.)
Immunogen	Full length human EPO recombinant protein.
Purification	Purified by antigen-affinity chromatography.
Conjugation	Unconjugated

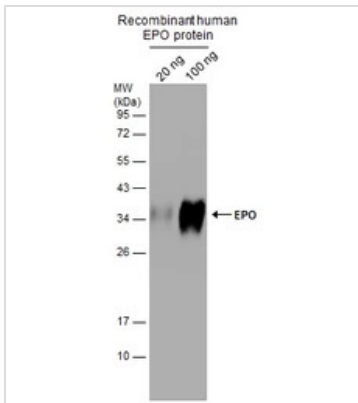
Note

For laboratory research use only. Not for any clinical, therapeutic, or diagnostic use in humans or animals. Not for animal or human consumption.

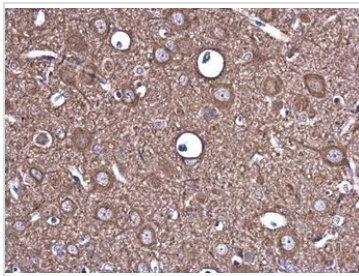
Purchasers shall not, and agree not to enable third parties to, analyze, copy, reverse engineer or otherwise attempt to determine the structure or sequence of the product.



For full product information, images and publications, please visit our [website](#).

DATA IMAGES

GTx112834 WB Image

Recombinant human EPO protein (with glycosylation) expressed in CHO cells (20 and 100 ng) were separated by 12% SDS-PAGE, and the membrane was blotted with (GTx112834) diluted at 1:20000.

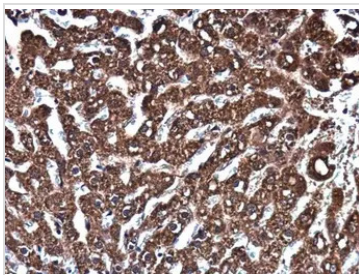

GTx112834 IHC-P Image

EPO antibody detects EPO protein at cytoplasm in rat brain by immunohistochemical analysis.

Sample: Paraffin-embedded rat brain.

EPO antibody (GTx112834) diluted at 1:400.

Antigen Retrieval: Citrate buffer, pH 6.0, 15 min

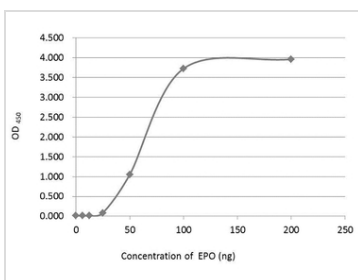

GTx112834 IHC-P Image

EPO antibody detects EPO protein at cytoplasm in rat liver by immunohistochemical analysis.

Sample: Paraffin-embedded rat liver.

EPO antibody (GTx112834) diluted at 1:400.

Antigen Retrieval: Citrate buffer, pH 6.0, 15 min


GTx112834 ELISA Image

An ELISA plate is coated with 50 μ L of EPO recombinant protein at concentration ranged from 0.125 μ g/mL to 4 μ g/mL. The coated protein is detected with EPO antibody (GTx112834) at 1 μ g/mL.



For full product information, images and publications, please visit our [website](https://www.genetex.com).