

PARP antibody [N1N2], N-term

Cat. No. GTX112839

Host	Rabbit
Clonality	Polyclonal
Isotype	IgG
Application	WB, ICC/IF, IHC-P, IP, ChIP assay
Reactivity	Human, Rat

Reference (1)
Package
100 µl, 25 µl

APPLICATION

Application Note

*Optimal dilutions/concentrations should be determined by the researcher.

Suggested dilution	Recommended dilution
WB	1:500-1:3000
ICC/IF	1:100-1:1000
IHC-P	1:100-1:1000
IP	1:100-1:500
ChIP assay	Assay dependent

Not tested in other applications.

Calculated MW 113 kDa. ([Note](#))

Product Note IP/MS validation was supported by references (PMID:30377408)

PROPERTIES

Form	Liquid
Buffer	PBS, 20% Glycerol
Preservative	0.01% Thimerosal
Storage	Store as concentrated solution. Centrifuge briefly prior to opening vial. For short-term storage (1-2 weeks), store at 4°C. For long-term storage, aliquot and store at -20°C or below. Avoid multiple freeze-thaw cycles.
Concentration	1 mg/ml (Please refer to the vial label for the specific concentration.)
Immunogen	Recombinant protein encompassing a sequence within the N-terminus region of human PARP1. The exact sequence is proprietary.
Purification	Purified by antigen-affinity chromatography.
Conjugation	Unconjugated



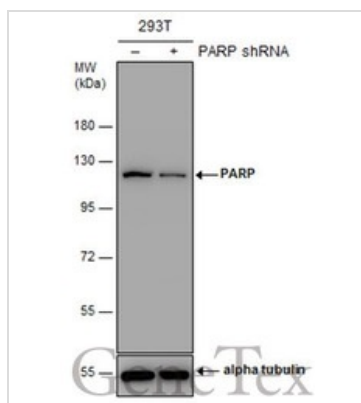
For full product information, images and publications, please visit our [website](#).

For laboratory research use only. Not for any clinical, therapeutic, or diagnostic use in humans or animals. Not for animal or human consumption.

Note

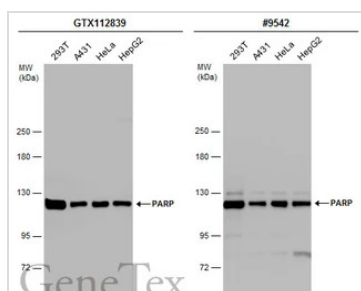
Purchasers shall not, and agree not to enable third parties to, analyze, copy, reverse engineer or otherwise attempt to determine the structure or sequence of the product.

DATA IMAGES



GTx112839 WB Image

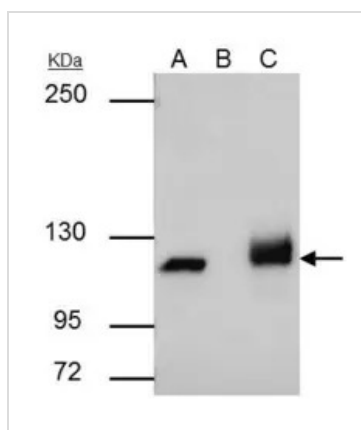
Non-transfected (-) and transfected (+) 293T whole cell extracts (30 µg) were separated by 7.5% SDS-PAGE, and the membrane was blotted with PARP antibody [N1N2], N-term (GTx112839) diluted at 1:1000.



GTx112839 WB Image

Various whole cell extracts (30 µg) were separated by 5% SDS-PAGE, and the membranes were blotted with PARP antibody [N1N2], N-term (GTx112839) diluted at 1:1000 and competitor's antibody (#9542) diluted at 1:1000. The HRP-conjugated anti-rabbit IgG antibody (GTx213110-01) was used to detect the primary antibody.

*The competitor is not affiliated with GeneTex and does not endorse this product.



GTx112839 IP Image

PARP1 antibody [N1N2], N-term immunoprecipitates PARP1 protein in IP experiments.

IP samples: HCT-116 whole cell extract

A. 30 µg HCT-116 whole cell extract

B. Control with 4 µg of preimmune Rabbit IgG

C. Immunoprecipitation of PARP1 protein by 4 µg PARP1 antibody [N1N2], N-term (GTx112839)

5 % SDS-PAGE

The immunoprecipitated PARP1 protein was detected by PARP1 antibody [N1N2], N-term (GTx112839) diluted at 1:500.

[EasyBlot anti-rabbit IgG (GTx221666-01) was used as a secondary reagent]



For full product information, images and publications, please visit our [website](https://www.genetex.com).