

Interferon gamma Receptor 1 antibody [BB1E2] (FITC)

Cat. No. GTX11286

| | |
|-------------|---------------|
| Host | Mouse |
| Clonality | Monoclonal |
| Isotype | IgG2a |
| Application | FACS |
| Reactivity | Human, Bovine |

Reference (1)

Package

50 µg

APPLICATION

Application Note

*Optimal dilutions/concentrations should be determined by the researcher.

| Suggested dilution | Recommended dilution |
|--------------------|----------------------|
| FACS | Neat |

Note : Use 10µl of the suggested working dilution to label 10⁶ cells in 100µl.

Not tested in other applications.

| | |
|---------------|---------------------------------------------------------------------------------------------------------------------|
| Calculated MW | 54 kDa. (Note) |
| Product Note | The epitope recognised by this antibody is reported to be sensitive to formaldehyde fixation and tissue processing. |

PROPERTIES

| | |
|---------------|------------------------------------------------------------------------------------------------------------------------------------------------------------------------------------------------------------------------------------------------|
| Form | Liquid |
| Buffer | PBS, 1% BSA |
| Preservative | 0.09% Sodium azide |
| Storage | Store as concentrated solution. Centrifuge briefly prior to opening vial. For short-term storage (1-2 weeks), store at 4°C. For long-term storage, aliquot and store at -20°C or below. Avoid multiple freeze-thaw cycles. Protect from light. |
| Concentration | 0.1 mg/ml (Please refer to the vial label for the specific concentration.) |
| Immunogen | Fusion protein of the extracellular part of the human interferon-gamma receptor (AA: Ala17-Gly245) conjugated to 11 AA of the c-myc proto-oncogene (for affinity purification). |
| Purification | Purified by ion exchange chromatography |
| Conjugation | Fluorescein isothiocyanate (FITC) |

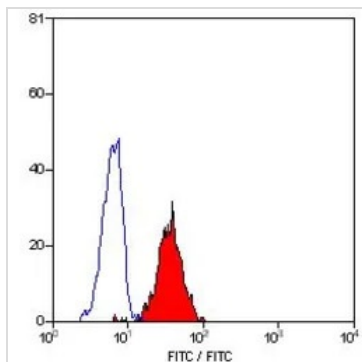
Note

For laboratory research use only. Not for any clinical, therapeutic, or diagnostic use in humans or animals. Not for animal or human consumption.

Purchasers shall not, and agree not to enable third parties to, analyze, copy, reverse engineer or otherwise attempt to determine the structure or sequence of the product.



For full product information, images and publications, please visit our [website](#).

DATA IMAGES

GTX11286 FACS Image

FACS analysis of human peripheral blood monocytes using GTX11286 Interferon gamma Receptor 1 antibody [BB1E2] (FITC).



For full product information, images and publications, please visit our [website](#).

Date 2024 / 05 / 20 Page 2 of 2