

ARF6 antibody [N1C3]

Cat. No. GTX112872

Host	Rabbit
Clonality	Polyclonal
Isotype	IgG
Applications	WB
Reactivity	Human, Mouse, Rat

References (1)

Package

100 µl, 25 µl

Applications

Application Note

*Optimal dilutions/concentrations should be determined by the researcher.

Suggested dilution	Recommended dilution
WB	1:500-1:3000

Not tested in other applications.

Calculated MW 20 kDa. ([Note](#))**Product Note** KO/KD validation is based on published data (PMID: 30801249).

Properties

Form	Liquid
Buffer	0.1M Tris, 0.1M Glycine, 20% Glycerol
Preservative	0.01% Thimerosal
Storage	Store as concentrated solution. Centrifuge briefly prior to opening vial. For short-term storage (1-2 weeks), store at 4°C. For long-term storage, aliquot and store at -20°C or below. Avoid multiple freeze-thaw cycles.
Concentration	0.89 mg/ml (Please refer to the vial label for the specific concentration.)
Immunogen	Recombinant protein encompassing a sequence within the center region of human ARF6. The exact sequence is proprietary.
Purification	Purified by antigen-affinity chromatography.
Conjugation	Unconjugated

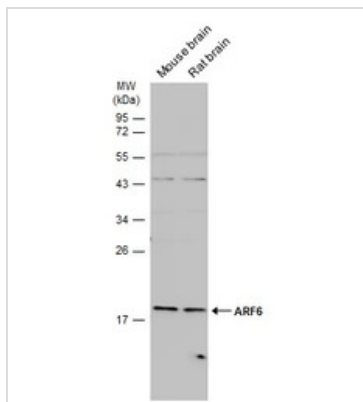
Note

For laboratory research use only. Not for any clinical, therapeutic, or diagnostic use in humans or animals. Not for animal or human consumption.

Purchasers shall not, and agree not to enable third parties to, analyze, copy, reverse engineer or otherwise attempt to determine the structure or sequence of the product.

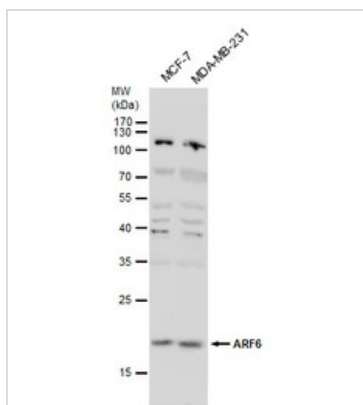
For full product information, images and publications, please visit our [website](#).

DATA IMAGES



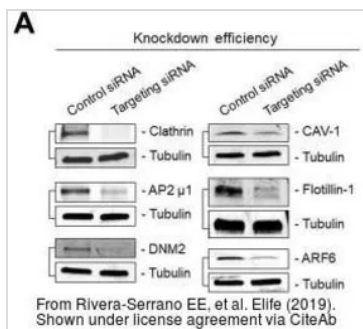
GTX112872 WB Image

Various tissue extracts (50 µg) were separated by 12% SDS-PAGE, and the membrane was blotted with ARF6 antibody (GTX112872) diluted at 1:1000. The HRP-conjugated anti-rabbit IgG antibody (GTX213110-01) was used to detect the primary antibody.



GTX112872 WB Image

ARF6 antibody [N1C3] detects ARF6 protein by western blot analysis. Various whole cell extracts (30 µg) were separated by 12 % SDS-PAGE, and blotted with ARF6 antibody [N1C3] (GTX112872) diluted by 1:1000



GTX112872 WB Image

The data was published in the journal Elife in 2019. [PMID: 30801249](https://pubmed.ncbi.nlm.nih.gov/30801249/)



For full product information, images and publications, please visit our [website](https://www.genetex.com).