

## Cyclin D1 antibody [N2C3]

Cat. No. GTX112874

Host	Rabbit
Clonality	Polyclonal
Isotype	IgG
Applications	WB, ICC/IF, IHC-P, IHC-Fr
Reactivity	Human, Mouse

References ( 10 )

Package

100 µl, 25 µl

## Applications

## Application Note

\*Optimal dilutions/concentrations should be determined by the researcher.

Suggested dilution	Recommended dilution
WB	Assay dependent
ICC/IF	1:100-1:1000
IHC-P	1:100-1:1000
IHC-Fr	Assay dependent

Not tested in other applications.

Calculated MW 34 kDa. ( [Note](#) )

## Properties

Form	Liquid
Buffer	PBS, 20% Glycerol
Preservative	0.01% Thimerosal
Storage	Store as concentrated solution. Centrifuge briefly prior to opening vial. For short-term storage (1-2 weeks), store at 4°C. For long-term storage, aliquot and store at -20°C or below. Avoid multiple freeze-thaw cycles.
Concentration	1 mg/ml (Please refer to the vial label for the specific concentration.)
Immunogen	Recombinant protein encompassing a sequence within the center region of human Cyclin D1. The exact sequence is proprietary.
Purification	Purified by antigen-affinity chromatography.
Conjugation	Unconjugated



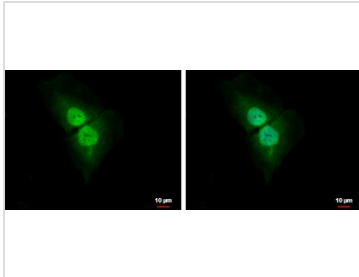
For full product information, images and publications, please visit our [website](#).

For laboratory research use only. Not for any clinical, therapeutic, or diagnostic use in humans or animals. Not for animal or human consumption.

#### Note

Purchasers shall not, and agree not to enable third parties to, analyze, copy, reverse engineer or otherwise attempt to determine the structure or sequence of the product.

#### DATA IMAGES



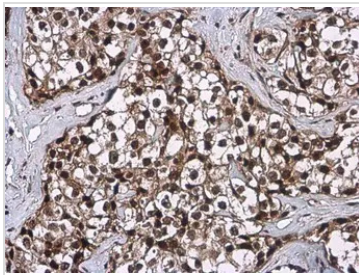
#### GTx112874 ICC/IF Image

Cyclin D1 antibody [N2C3] detects Cyclin D1 protein at cytoplasm and nucleus by immunofluorescent analysis.

Sample: SKNSH cells were fixed in 4% paraformaldehyde at RT for 15 min.

Green: Cyclin D1 protein stained by Cyclin D1 antibody [N2C3] (GTx112874) diluted at 1:500.

Blue: Hoechst 33342 staining.



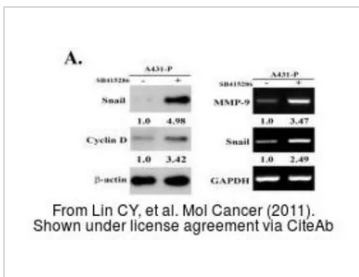
#### GTx112874 IHC-P Image

Cyclin D1 antibody [N2C3] detects Cyclin D1 protein at nucleus by immunohistochemical analysis.

Sample: Paraffin-embedded human breast carcinoma.

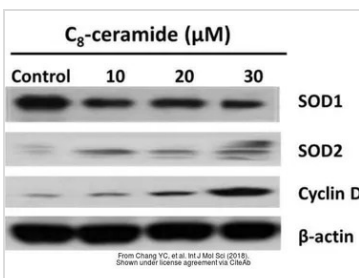
Cyclin D1 stained by Cyclin D1 antibody [N2C3] (GTx112874) diluted at 1:500.

Antigen Retrieval: Citrate buffer, pH 6.0, 15 min



#### GTx112874 WB Image

The data was published in the journal Mol Cancer in 2011. [PMID: 21777419](https://pubmed.ncbi.nlm.nih.gov/21777419/)



#### GTx112874 WB Image

The data was published in the journal Int J Mol Sci in 2018. [PMID: 30279365](https://pubmed.ncbi.nlm.nih.gov/30279365/)



For full product information, images and publications, please visit our [website](https://www.genetex.com).